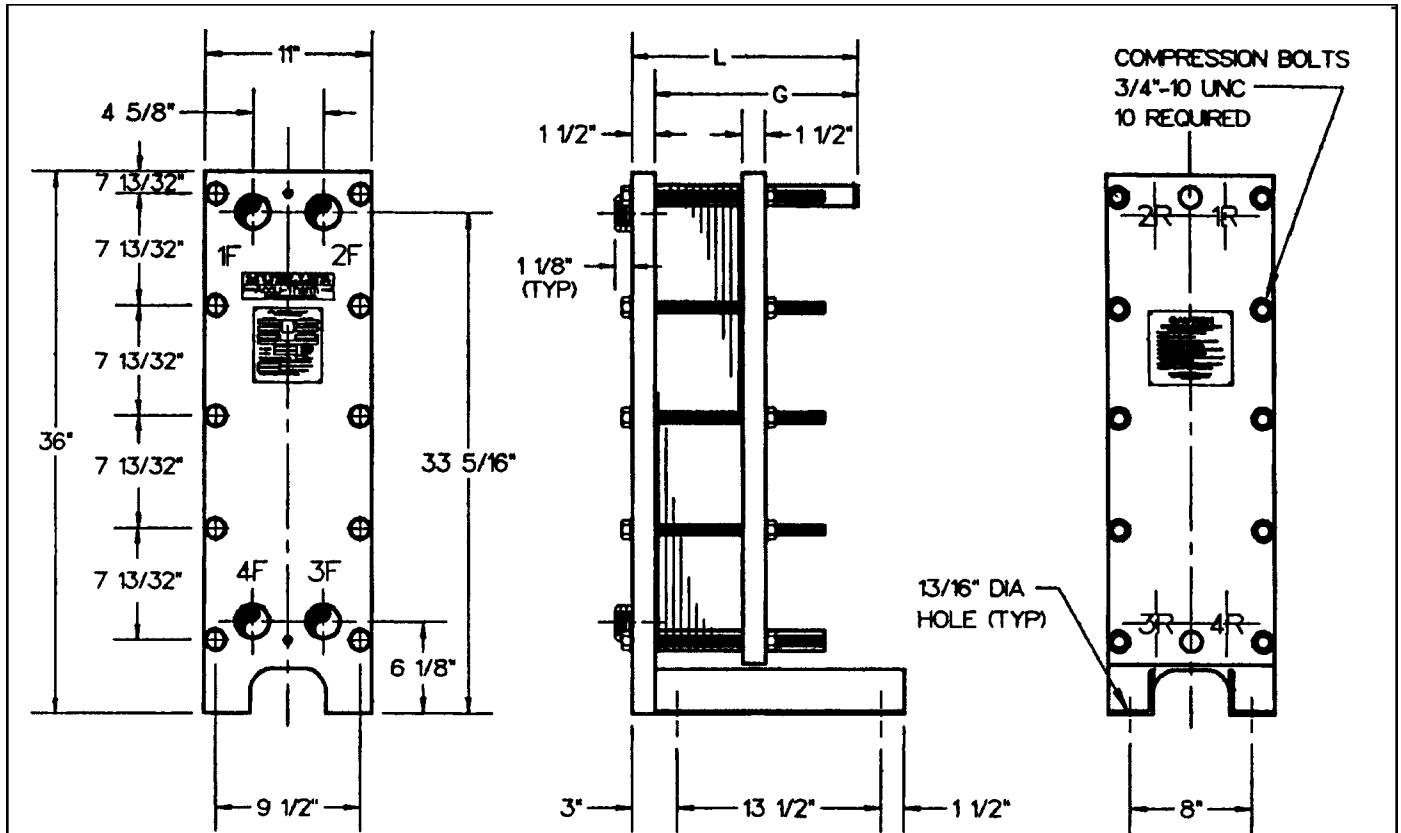


# Accu-Therm<sup>®</sup> Plate Heat Exchangers

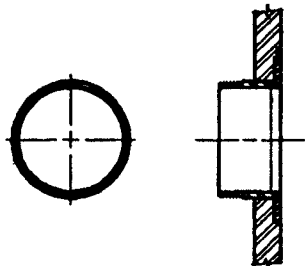
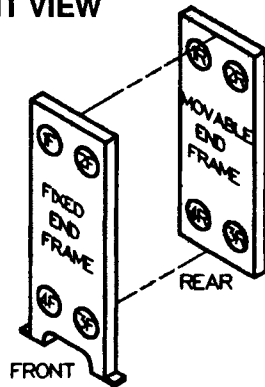


**FRONT VIEW**

**SIDE VIEW**

**REAR VIEW**

**PORT LOCATIONS**



**STANDARD CONNECTION**

Standard 2" Pipe T.O.E.  
(Refer to reverse side for additional connection details.)

**STANDARD MATERIALS OF CONSTRUCTION**

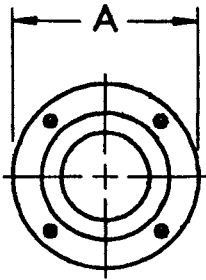
- End frames ..... SA-515-70, SA-516-70, or equivalent
- Plate hanger ..... Type 304 stainless steel
- Compression bolts (zinc plated) ..... SA-193-B7
- Compression nuts (zinc plated) ..... SA-194-2H
- Shroud (optional) ..... Type 304 stainless steel
- Paint ..... Corrosion-resistant paint

Refer to computer printout for variable dimensions and complete plate, gasket, and connection specifications.

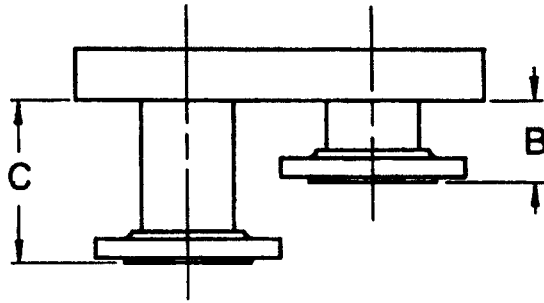
**MUELLER<sup>®</sup>**

**MODEL AT10  
FRAME TYPE C-30**

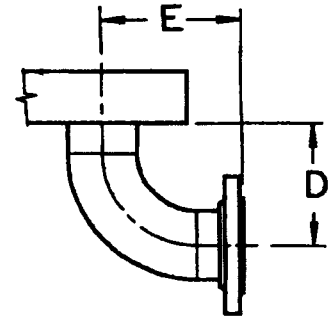
**FLANGED CONNECTIONS**



**FRONT VIEW**



**TOP VIEW**



**TOP VIEW**

Connection	Size	A	B	C	D	E	No. Bolts/Conn.	Bolt Size
Pipe T.O.E.	2"	—	—	—	—	—	—	—
Lap-joint flange	1"	4 <sup>7</sup> / <sub>8</sub> "	4"	8"	—	—	4	5 <sup>8</sup> / <sub>8</sub> "-11 UNC
	1 <sup>1</sup> / <sub>2</sub> "	6 <sup>1</sup> / <sub>8</sub> "	4"	8"	—	—	4	3 <sup>4</sup> / <sub>4</sub> "-10 UNC
	2"	6 <sup>1</sup> / <sub>2</sub> "	4"	8"	—	—	8	5 <sup>8</sup> / <sub>8</sub> "-11 UNC
Lap joint with elbow	1"	4 <sup>7</sup> / <sub>8</sub> "	—	—	3 <sup>9</sup> / <sub>16</sub> "	4 <sup>1</sup> / <sub>2</sub> "	4	5 <sup>8</sup> / <sub>8</sub> "-11 UNC
	1 <sup>1</sup> / <sub>2</sub> "	6 <sup>1</sup> / <sub>8</sub> "	—	—	5 <sup>13</sup> / <sub>16</sub> "	6 <sup>3</sup> / <sub>4</sub> "	4	3 <sup>4</sup> / <sub>4</sub> "-10 UNC
	2"	6 <sup>1</sup> / <sub>2</sub> "	—	—	8 <sup>1</sup> / <sub>16</sub> "	9"	8	5 <sup>8</sup> / <sub>8</sub> "-11 UNC

NOTE: 1. Adjacent flange faces must be offset in some cases. Flanges located at Port Positions 1 and 4 are extended to "C" dimension when offset is required.  
 2. If connections are other than the standard connection (shown on front), or if the unit is a multipass, contact Paul Mueller Company for clarification.

**PLATE CAPACITY / GUIDE LENGTH**

Guide length (DM G)	13 <sup>1</sup> / <sub>2</sub> "
Frame length (DM L)	15"
Plate cap. AT10 H 0.6 mm	62

**PLATE CAPACITY / COMPRESSION-BOLT LENGTH**

Compression-bolt length	12"	18"
Plate cap. AT10 H 0.6 mm	44	79

**Paul Mueller Company**

P.O. Box 828 • Springfield, MO 65801-0828

Telephone: (417) 831-3000 • 1-800-MUELLER

Fax: (417) 831-6642