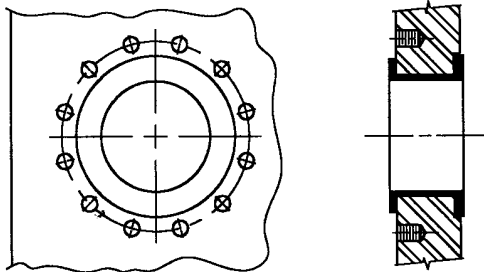
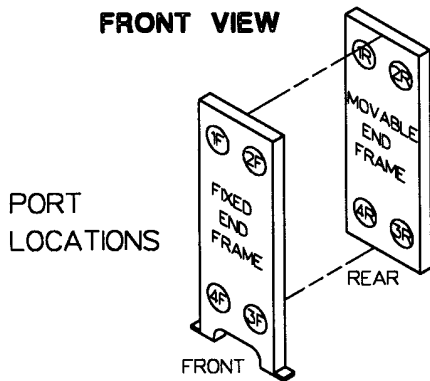
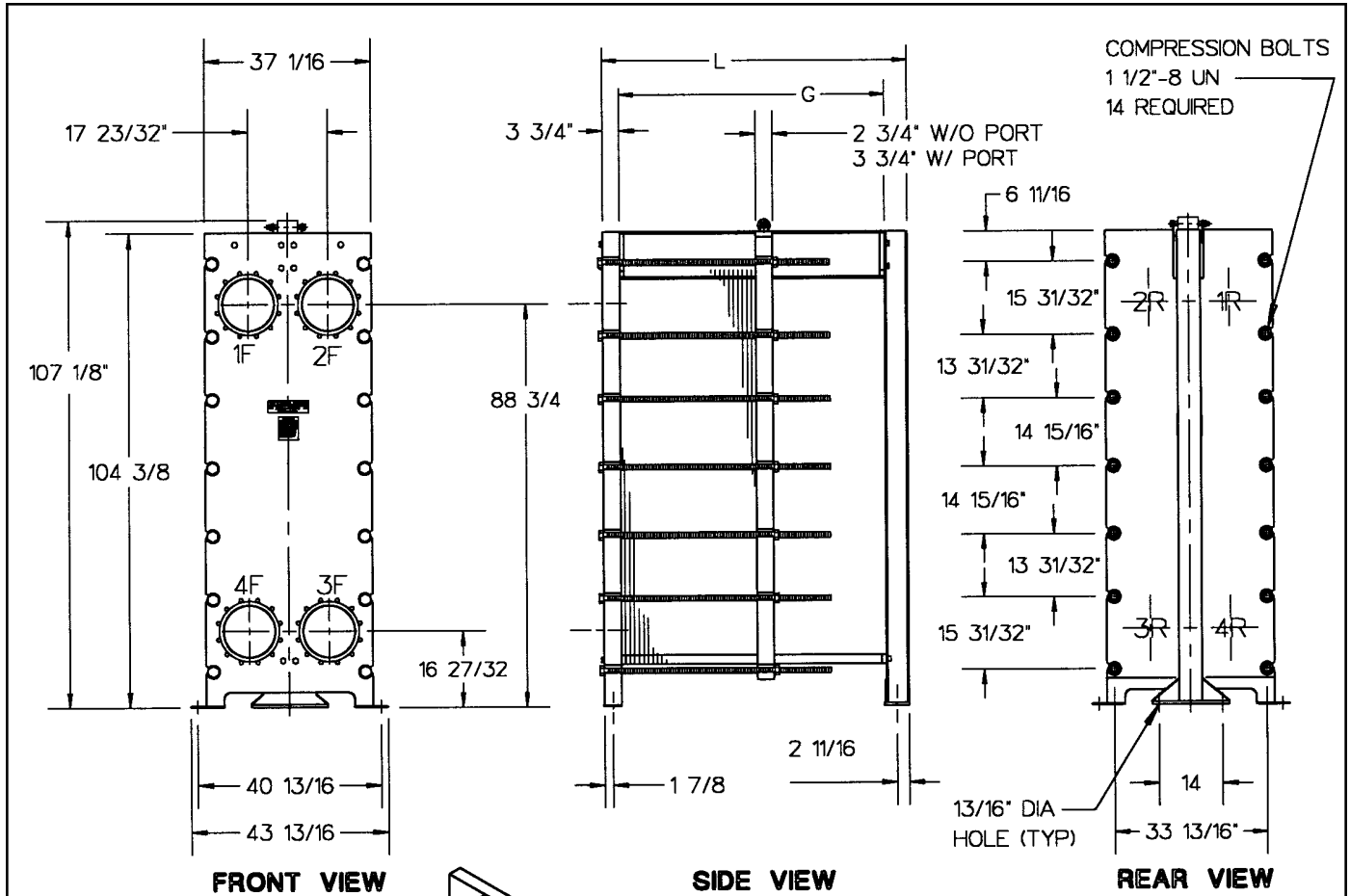


Accu-Therm[®] Plate Heat Exchangers



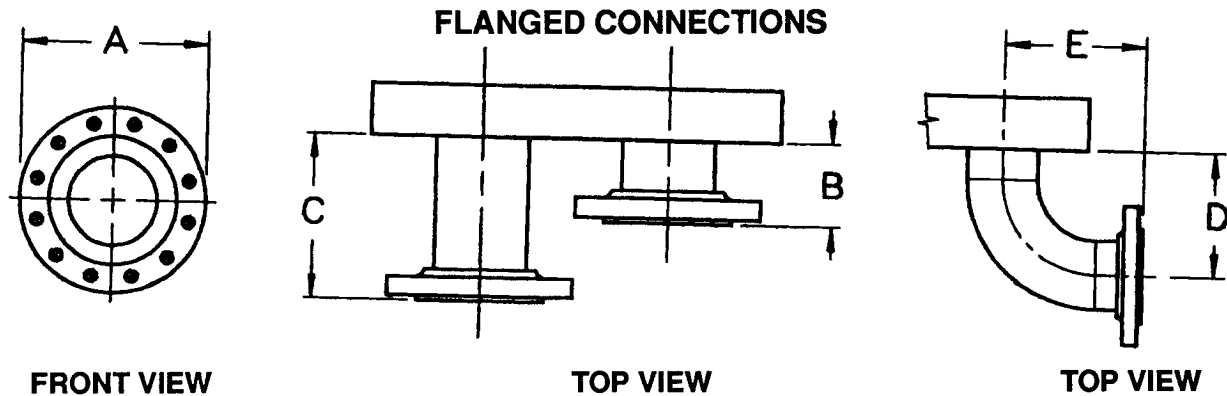
STANDARD MATERIALS OF CONSTRUCTION

End frames SA-515-70, SA-516-70, or equivalent
 Plate hanger Type 304 stainless steel
 Compression bolts (zinc plated) SA-193-B7
 Compression nuts (zinc plated) SA-194-2H
 Connection studs (zinc plated) (optional).....SA-193-B7
 Connection nuts (zinc plated) (optional).....SA-193-2H
 Shroud (optional) Type 304 stainless steel
 Paint Corrosion-resistant paint

Refer to computer printout for variable dimensions and complete plate, gasket, and connection specifications.

MUELLER[®]

**MODEL AT130
FRAME TYPE B-20**



Connection	Size	A	B	C	D	E	No. Bolts/Conn.	Bolt Size
Studded port	10"	—	—	—	—	—	12	7/8"-9 UNC
Lap-joint flange	10"	16"	—	—	—	—	12	7/8"-9 UNC
	12"	19"	9 ³ / ₄ "	14 ³ / ₄ "	—	—	12	7/8"-9 UNC
Lap joint with elbow	10"	16"	—	—	17"	18"	12	7/8"-9 UNC
	12"	19"	—	—	20"	21"	12	7/8"-9 UNC

NOTE: 1. Adjacent flange faces must be offset in some cases. Flanges located at Port Positions 1 and 4 are extended to "C" dimension when offset is required.
 2. If connections are other than the standard connection (shown on front), or if the unit is a multipass, contact Paul Mueller Company for clarification.

PLATE CAPACITY / GUIDE LENGTH

Guide length (DM G)	42"	60"	78"	96"	114"	132"
Frame length (DM L)	50 ³ / ₄ "	68 ³ / ₄ "	86 ³ / ₄ "	104 ³ / ₄ "	122 ³ / ₄ "	140 ³ / ₄ "
Plate cap. AT130 H 0.6 mm	53	135	217	298	380	462
Plate cap. AT130 F 0.6 mm	70	178	285	393	500	—
Plate cap. AT130M H/V 0.6 mm	60	154	247	340	433	500
Plate cap. AT130M H/V 0.5mm	62	158	254	349	445	500

PLATE CAPACITY / COMPRESSION-BOLT LENGTH

Compression-bolt length	12"	18"	24"	36"	48"	60"	78"	96"	114"	132"
Plate cap. AT130 H 0.6 mm	14	41	68	123	177	232	313	395	477	500
Plate cap. AT130 F 0.6 mm	18	54	90	161	233	305	412	500	—	—
Plate cap. AT130M H/V 0.6 mm	16	47	78	140	202	264	357	450	500	—
Plate cap. AT130M H/V 0.5 mm	16	48	80	144	208	272	367	463	500	—

Paul Mueller Company

P.O. Box 828 • Springfield, MO 65801-0828

Telephone: (417) 831-3000 • 1-800-MUELLER

Fax: (417) 831-6642