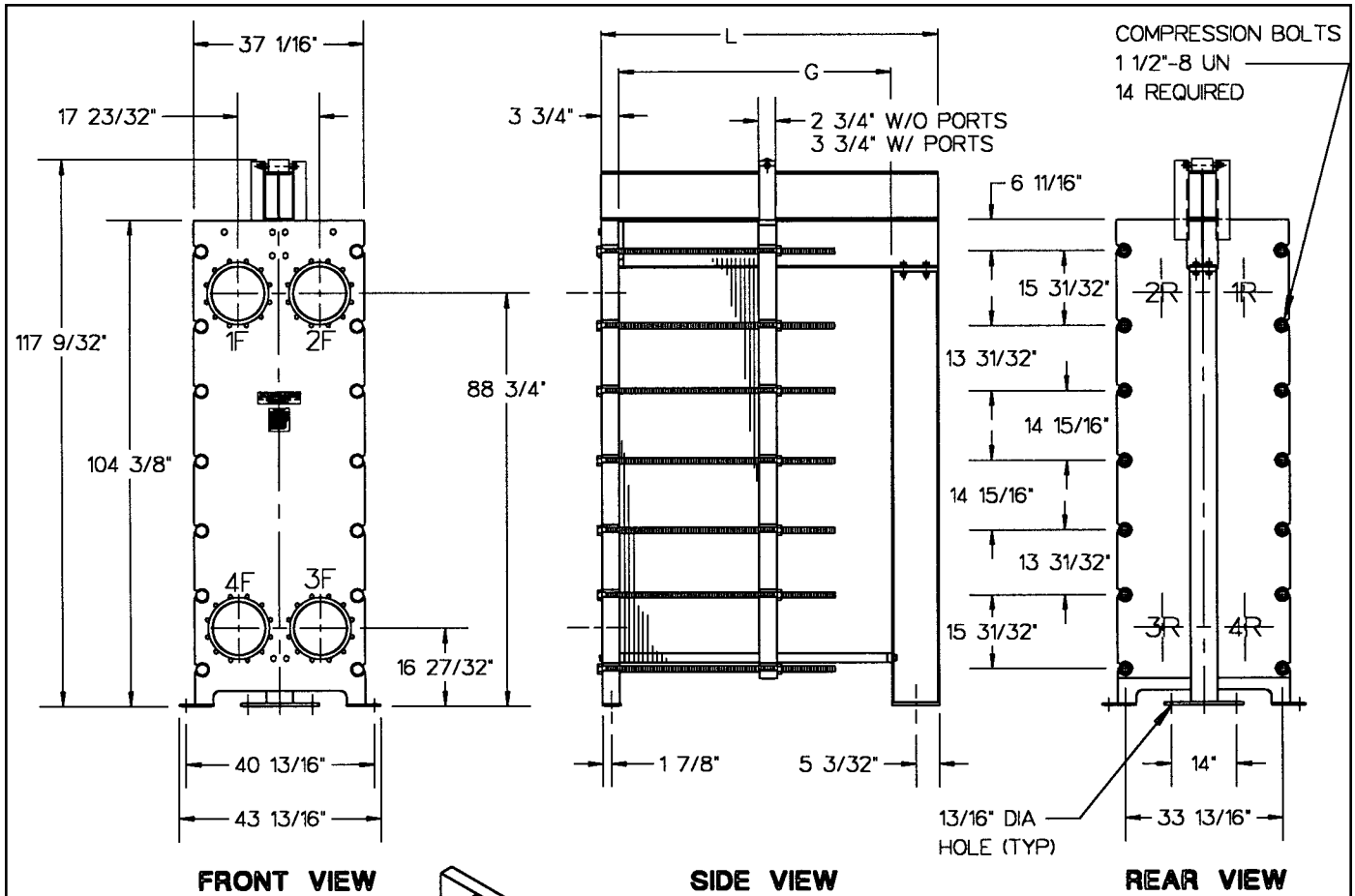


Accu-Therm[®]

Plate Heat Exchangers

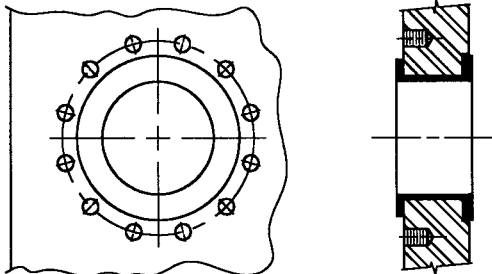
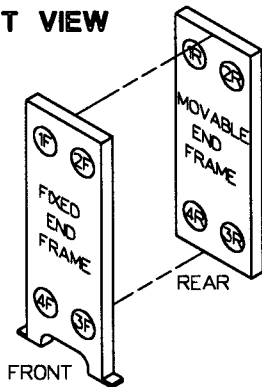


FRONT VIEW

SIDE VIEW

REAR VIEW

PORT
LOCATIONS



STANDARD CONNECTION
STANDARD 10" STUDDED PORT
(REFER TO REVERSE SIDE FOR ADDITIONAL
CONNECTION DETAILS).

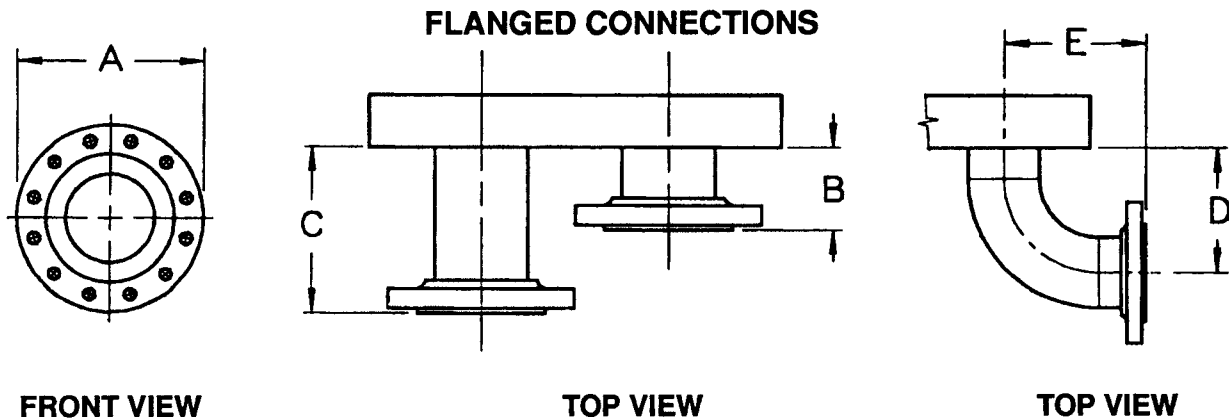
STANDARD MATERIALS OF CONSTRUCTION

End frames SA-515-70, SA-516-70, or equivalent
Plate hanger Type 304 stainless steel
Compression bolts (zinc plated) SA-193-B7
Compression nuts (zinc plated) SA-194-2H
Connection studs (zinc plated) (optional) SA-193-B7
Connection nuts (zinc plated) (optional) SA-193-2H
Shroud (optional) Embossed aluminum
Paint Corrosion-resistant paint

Refer to computer printout for variable dimensions and complete plate, gasket, and connection specifications.

MUELLER[®]

MODEL AT130
FRAME TYPE RB-20



Connection	Size	A	B	C	D	E	No. Bolts/Conn.	Bolt Size
Studded port	10"	—	—	—	—	—	12	7/8"-9 UNC
Lap-joint flange	10"	16"	4 ³ / ₄ "	—	—	—	12	7/8"-9 UNC
	12"	19"	9 ³ / ₄ "	14 ³ / ₄ "	—	—	12	7/8"-9 UNC
Lap joint with elbow	10"	16"	—	—	17"	18"	12	7/8"-9 UNC
	12"	19"	—	—	20"	21"	12	7/8"-9 UNC

NOTE: 1. Adjacent flange faces must be offset in some cases. Flanges located at Port Positions 1 and 4 are extended to "C" dimension when offset is required.
 2. If connections are other than the standard connection (shown on front), or if the unit is a multipass, contact Paul Mueller Company for clarification.

PLATE CAPACITY / GUIDE LENGTH

Guide length (DM G)	132"	150"	168"
Frame length (DM L)	145 ¹⁵ / ₁₆ "	163 ¹⁵ / ₁₆ "	181 ¹⁵ / ₁₆ "
Plate cap. AT130 H 0.6 mm	—	544	625
Plate cap. AT130 F 0.6 mm	608	715	823
Plate cap. AT130M H/V 0.6 mm	526	619	712
Plate cap. AT130M H/V 0.5 mm	541	637	732

PLATE CAPACITY / COMPRESSION-BOLT LENGTH

Compression-bolt length	114"	132"	150"
Plate cap. AT130 H 0.6 mm	—	559	640
Plate cap. AT130 F 0.6 mm	627	735	842
Plate cap. AT130M H/V 0.6 mm	544	637	730
Plate cap. AT130M H/V 0.5 mm	559	655	750

Paul Mueller Company

P.O. Box 828 • Springfield, MO 65801-0828

Telephone: (417) 831-3000 • 1-800-MUELLER

Fax: (417) 831-6642