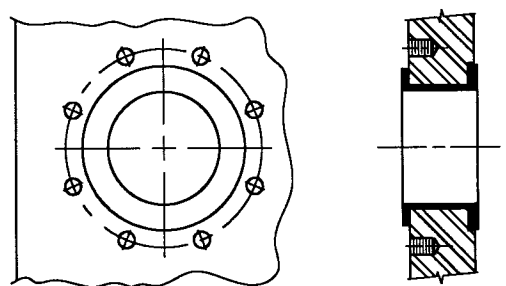
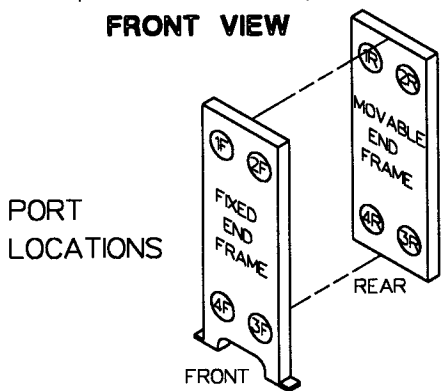
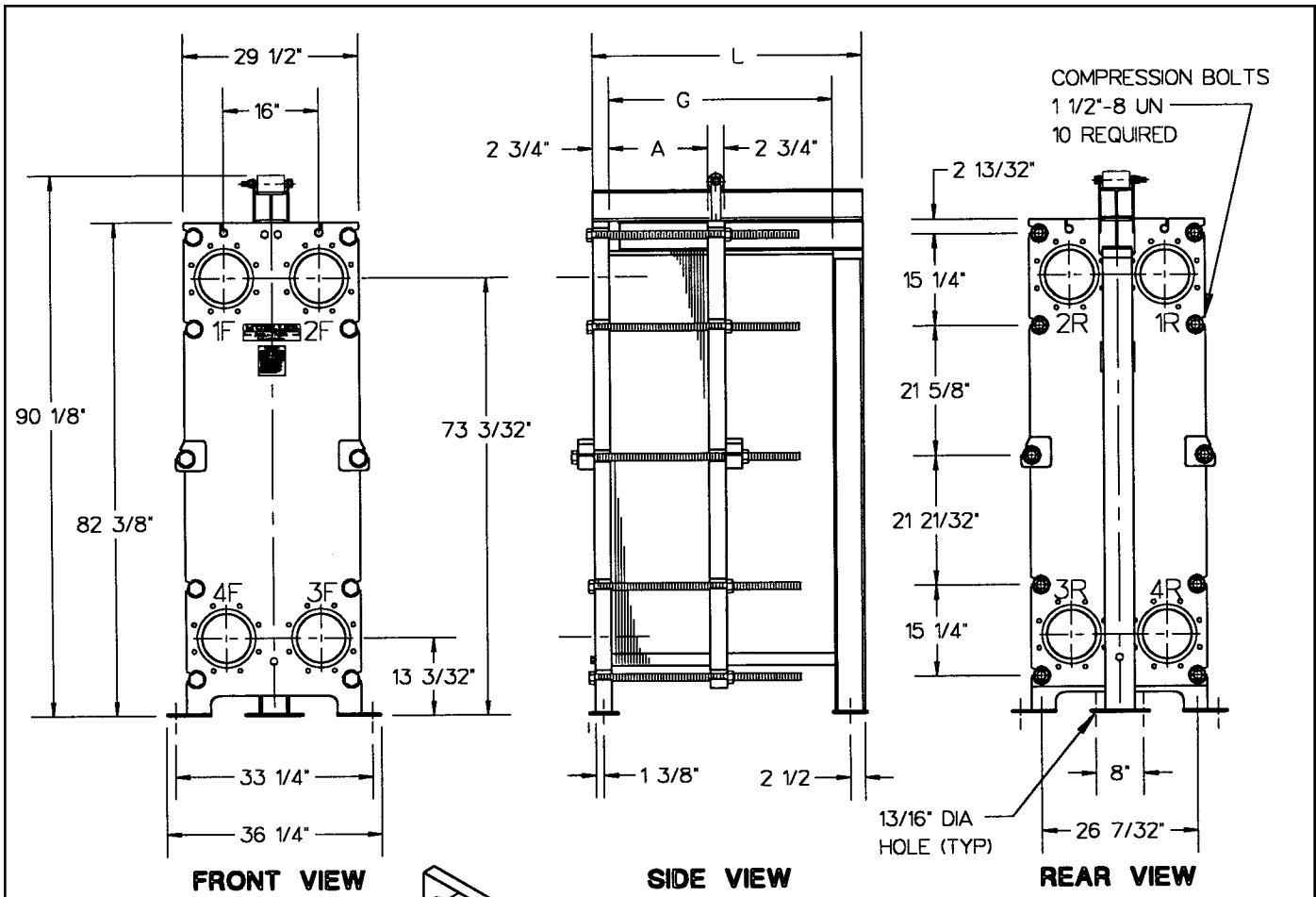


Accu-Therm[®]

Plate Heat Exchangers



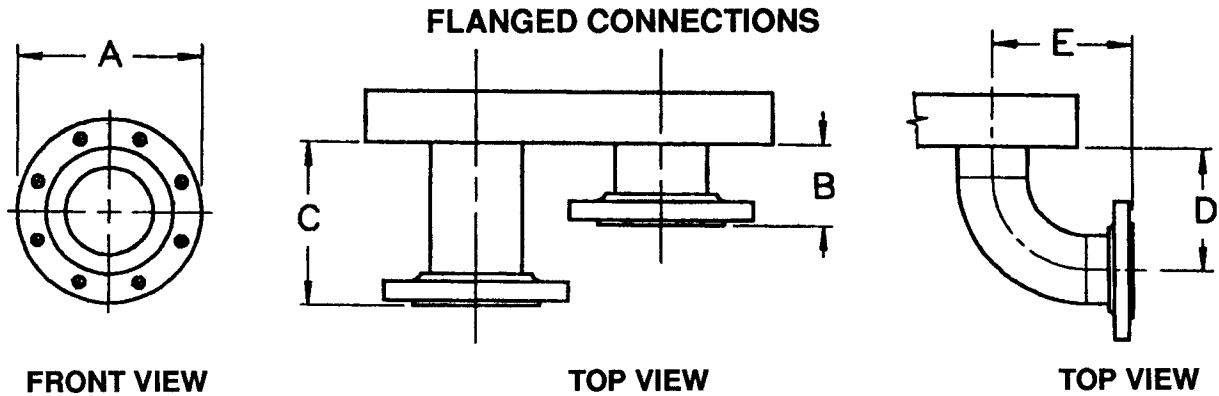
STANDARD MATERIALS OF CONSTRUCTION

- End frames SA-515-70, SA-516-70, or equivalent
- Plate hanger Type 304 stainless steel
- Compression bolts (zinc plated) SA-193-B7
- Compression nuts (zinc plated) SA-194-2H
- Connection studs (zinc plated) (optional).....SA-193-B7
- Connection nuts (zinc plated) (optional).....SA-193-2H
- Shroud (optional) Type 304 stainless steel
- Paint Corrosion-resistant paint

Refer to computer printout for variable dimensions and complete plate, gasket, and connection specifications.

MUELLER[®]

MODEL AT184
FRAME TYPE RB-10



| Connection | Size | A | B | C | D | E | No. Bolts/Conn. | Bolt Size |
|----------------------|------|---|---|---|---|---|-----------------|-------------|
| Studded port | 6" | — | — | — | — | — | 8 | 3/4"-10 UNC |
| | 8" | — | — | — | — | — | 8 | 3/4"-10 UNC |
| Lap-joint flange | N/A | — | — | — | — | — | — | — |
| Lap joint with elbow | N/A | — | — | — | — | — | — | — |

NOTE: 1. If connections are other than the standard connection (shown on front), or if the unit is a multipass, contact Paul Mueller Company for clarification.

PLATE CAPACITY / GUIDE LENGTH

| | | |
|----------------------------|-----------------------------------|-----------------------------------|
| Guide length (DM G) | 138" | 156" |
| Frame length (DM L) | 145 ³ / ₄ " | 163 ³ / ₄ " |
| Plate cap. AT184FF 1.00 mm | 232 | 270 |
| Plate cap. AT184FF 0.9 mm | 234 | 272 |

PLATE CAPACITY / COMPRESSION-BOLT LENGTH

| | | |
|----------------------------|------|------|
| Compression-bolt length | 132" | 144" |
| Plate cap. AT184FF 1.00 mm | 257 | 294 |
| Plate cap. AT184FF 0.9 mm | 257 | 294 |

Paul Mueller Company

P.O. Box 828 • Springfield, MO 65801-0828

Telephone: (417) 831-3000 • 1-800-MUELLER

Fax: (417) 831-6642