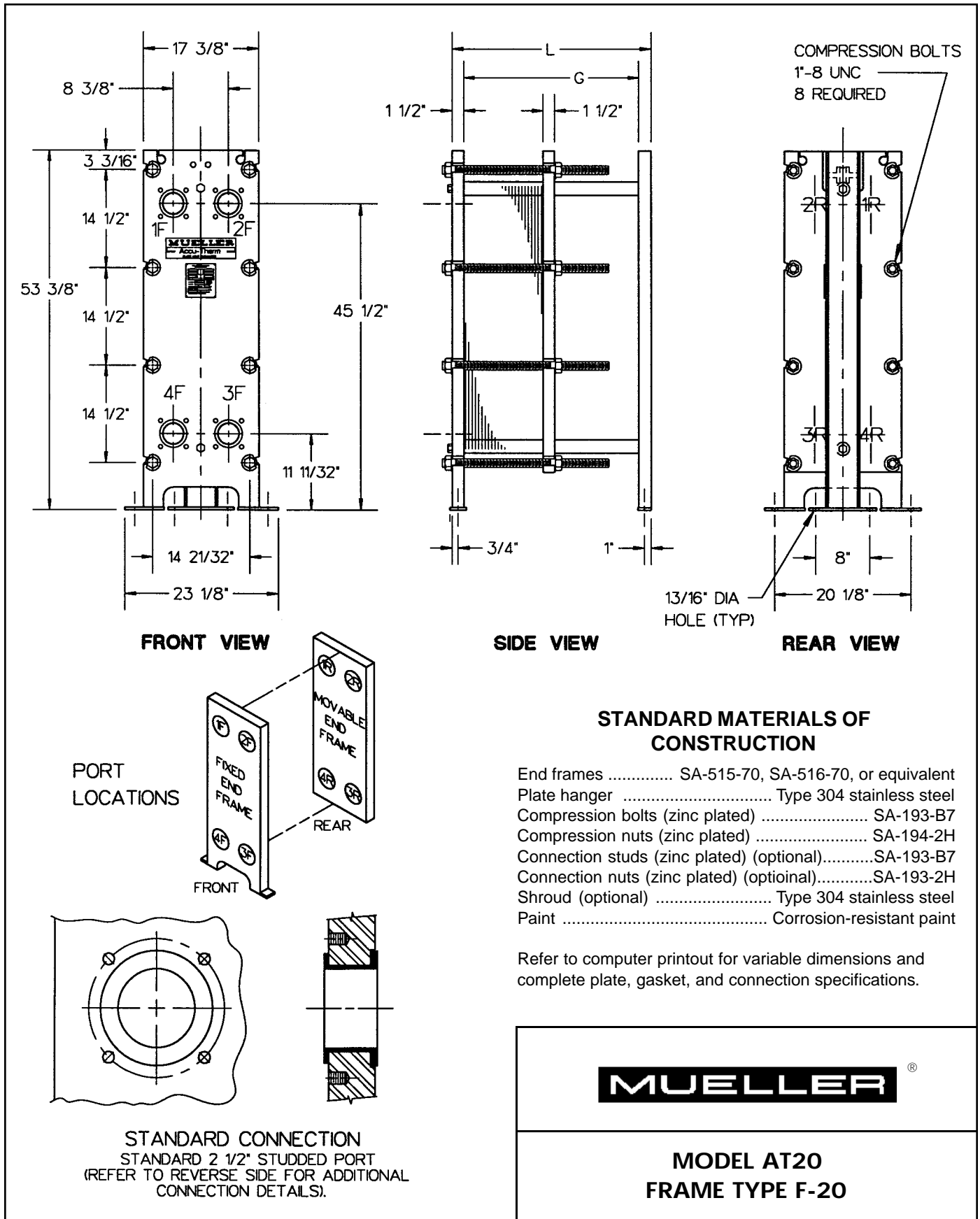
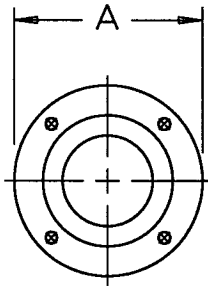


# Accu-Therm<sup>®</sup>

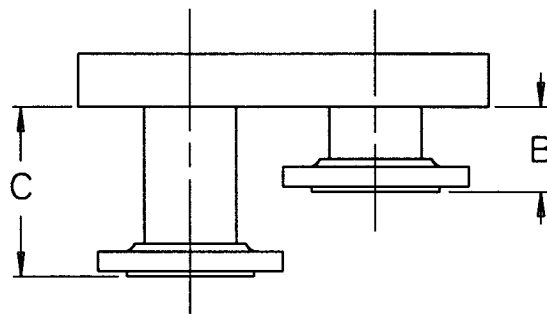
## Plate Heat Exchangers



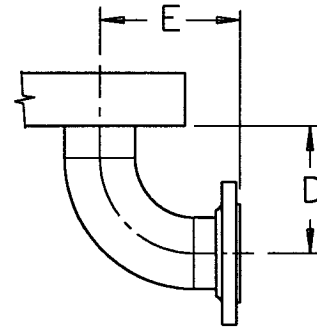
### FLANGED CONNECTIONS



**FRONT VIEW**



**TOP VIEW**



**TOP VIEW**

CONNECTION	SIZE	A	B	C	D	E	NO. BOLTS/CONN	BOLT SIZE
STUDED PORT	2 1/2"	7"	-	-	-	-	4	5/8"- 11UNC
LAP JOINT FLANGE	2"	6"	4"	-	-	-	4	5/8"- 11UNC
	2 1/2"	7"	4"	-	-	-	4	5/8"- 11UNC
	3"	7 1/2"	4"	-	-	-	4	5/8"- 11UNC
LAP JOINT W/ ELBOW	2"	6"	-	-	7 5/16"	9"	4	5/8"- 11UNC
	2 1/2"	7"	-	-	5 3/4"	6 3/4"	4	5/8"- 11UNC
	3"	7 1/2"	-	-	6 1/2"	7 1/2"	4	5/8"- 11UNC

**NOTE:** 1. ADJACENT FLANGE FACES MUST BE OFFSET IN SOME CASES. FLANGES LOCATED AT PORT POSITIONS 1 AND 4 ARE EXTENDED TO "C" DIMENSION WHEN OFFSET IS REQUIRED.

2. IF CONNECTIONS ARE OTHER THAN THE STANDARD CONNECTION (SHOWN ON FRONT), OR IF THE UNIT IS A MULTI-PASS, CONTACT PAUL MUELLER COMPANY FOR CLARIFICATION.

### PLATE CAPACITY / GUIDE LENGTH

GUIDE LENGTH (DIM G)	30"	48"
FRAME LENGTH (DIM L)	33 3/8"	51 3/8"
PLATE CAP. AT20 H/V 0.6mm	84	173
PLATE CAP. AT20 LOCK-IN H/V 0.6mm	86	174
PLATE CAP. AT20 LOCK-IN H/V 0.5mm	88	179
PLATE CAP. AT20P H/V 0.5mm	96	196

### PLATE CAPACITY / COMPRESSION BOLT LENGTH

COMPRESSION BOLT LENGTH	12"	18"	24"	36"	48"
PLATE CAP. AT20 H/V 0.6mm	29	59	88	147	206
PLATE CAP. AT20 LOCK-IN H/V 0.6mm	30	60	89	148	207
PLATE CAP. AT20 LOCK-IN H/V 0.5mm	30	60	90	151	211
PLATE CAP. AT20P H/V 0.5mm	33	66	99	165	232

### Paul Mueller Company

P.O. Box 828 • Springfield, MO 65801-0828

Telephone: (417) 831-3000 • 1-800-MUELLER

Fax: (417) 831-6642