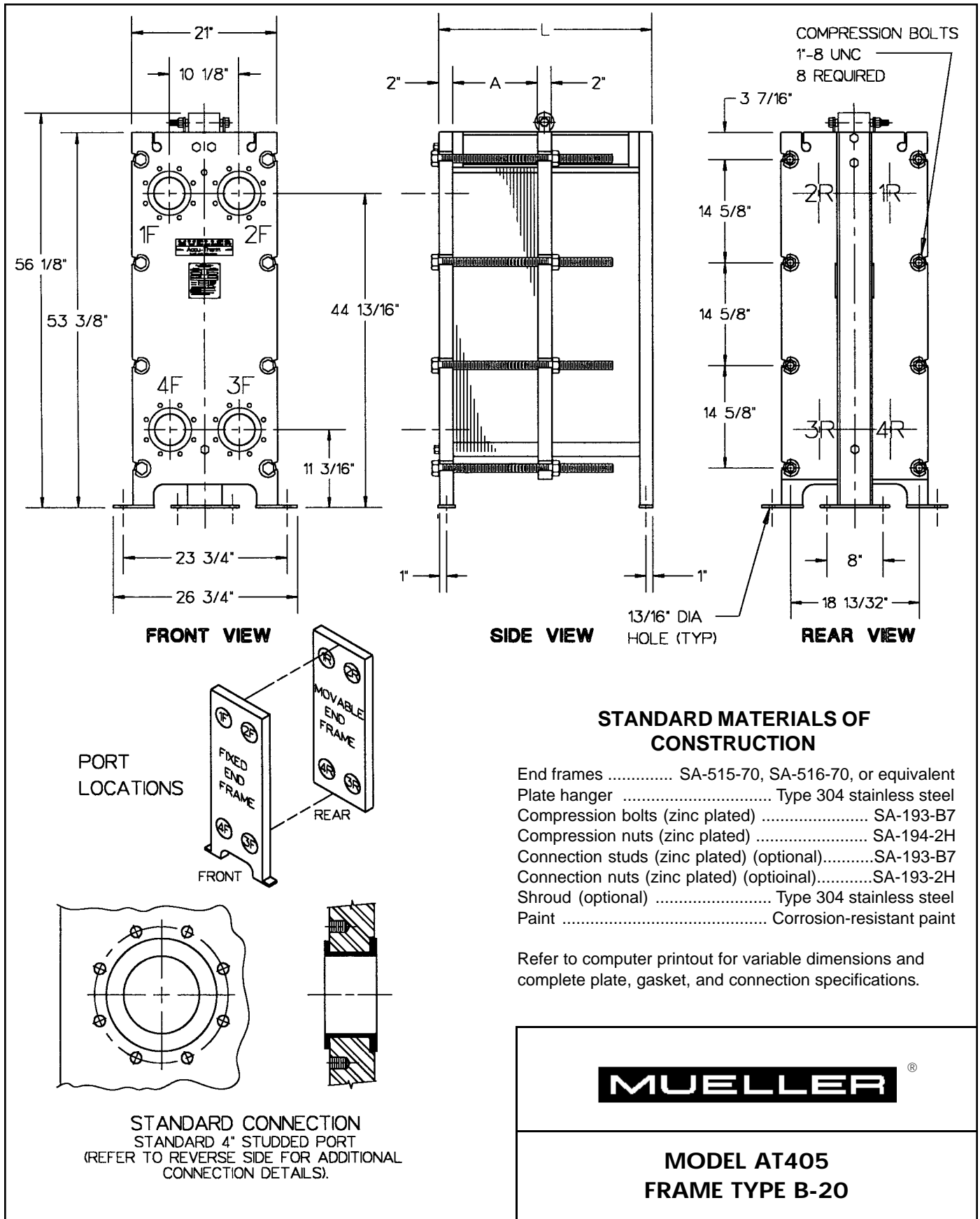
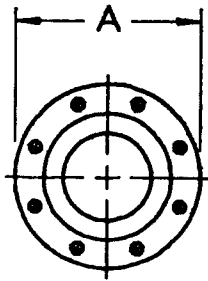


Accu-Therm[®]

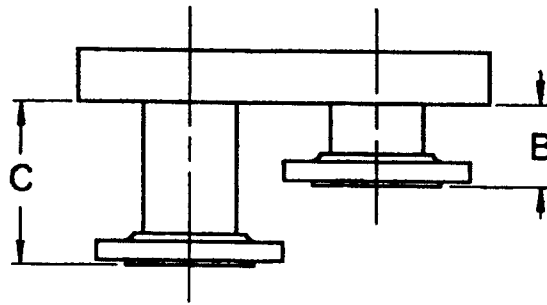
Plate Heat Exchangers



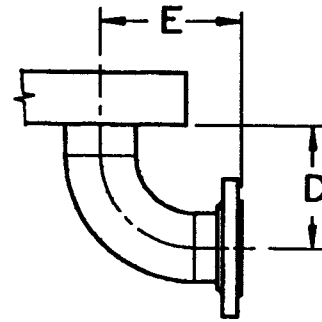
FLANGED CONNECTIONS



FRONT VIEW



TOP VIEW



TOP VIEW

Connection	Size	A	B	C	D	E	No. Bolts/Conn.	Bolt Size
Studded port	4"	—	—	—	—	—	8	5/8"-11 UNC
Lap-joint flange	3"	7 1/2"	3 1/16"	—	—	—	4	5/8"-11 UNC
	4"	9"	4 13/16"	—	—	—	8	5/8"-11 UNC
	6"	11"	4"	8 3/4"	—	—	8	3/4"-10 UNC
Lap joint with elbow	3"	7 1/2"	—	—	6 1/2"	7 1/2"	4	5/8"-11 UNC
	4"	9"	—	—	8"	9"	8	5/8"-11 UNC
	6"	11"	—	—	11"	12"	8	3/4"-10 UNC

NOTE: 1. Adjacent flange faces must be offset in some cases. Flanges located at Port Positions 1 and 4 are extended to "C" dimension when offset is required.
 2. If connections are other than the standard connection (shown on front), or if the unit is a multipass, contact Paul Mueller Company for clarification.

PLATE CAPACITY / GUIDE LENGTH

Guide length (DM G)	30"	48"	66"	84"	102"	120"	138"
Frame length (DM L)	33 7/8"	51 7/8"	69 7/8"	87 7/8"	105 7/8"	123 7/8"	141 7/8"
Plate cap. AT405 H/V 0.6 mm	60	148	236	324	413	501	589
Plate cap. AT405 P 0.6 mm	63	155	247	339	431	523	615

PLATE CAPACITY / COMPRESSION-BOLT LENGTH

Compression-bolt length	12"	18"	24"	36"	48"	60"	78"	96"	114"	132"
Plate cap. AT405 H/V 0.6 mm	27	56	86	144	203	262	350	438	526	615
Plate cap. AT405 P 0.6 mm	28	59	89	151	212	274	366	458	550	642

Paul Mueller Company

P.O. Box 828 • Springfield, MO 65801-0828

Telephone: (417) 831-3000 • 1-800-MUELLER

Fax: (417) 831-6642