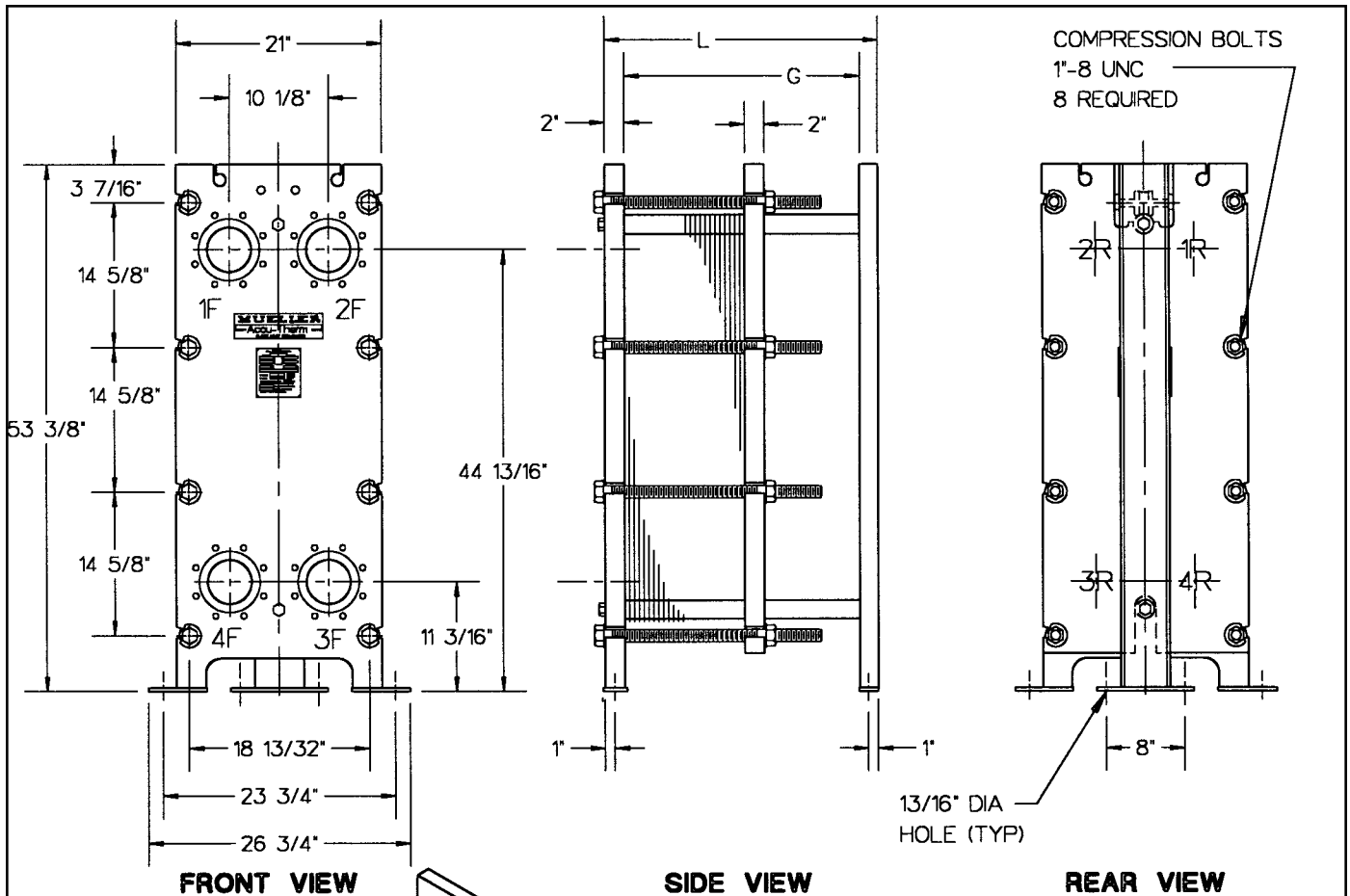


# Accu-Therm<sup>®</sup>

## Plate Heat Exchangers

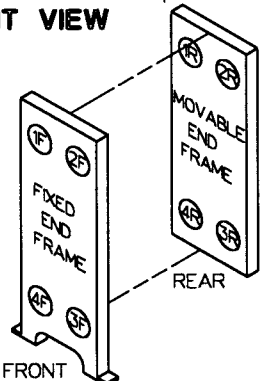


**FRONT VIEW**

**SIDE VIEW**

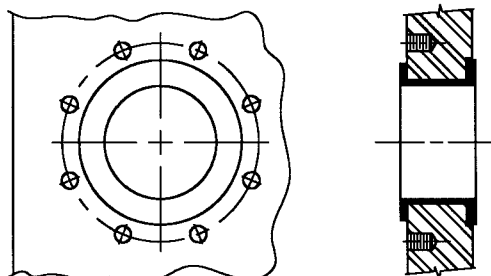
**REAR VIEW**

PORT LOCATIONS



FRONT

REAR



**STANDARD CONNECTION**  
STANDARD 4" STUDDED PORT  
(REFER TO REVERSE SIDE FOR ADDITIONAL CONNECTION DETAILS).

### STANDARD MATERIALS OF CONSTRUCTION

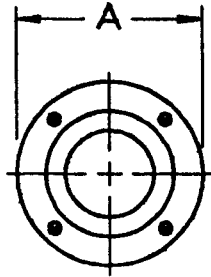
- End frames ..... SA-515-70, SA-516-70, or equivalent
- Plate hanger ..... Type 304 stainless steel
- Compression bolts (zinc plated) ..... SA-193-B7
- Compression nuts (zinc plated) ..... SA-194-2H
- Connection studs (zinc plated) (optional).....SA-193-B7
- Connection nuts (zinc plated) (optional).....SA-193-2H
- Shroud (optional) ..... Type 304 stainless steel
- Paint ..... Corrosion-resistant paint

Refer to computer printout for variable dimensions and complete plate, gasket, and connection specifications.

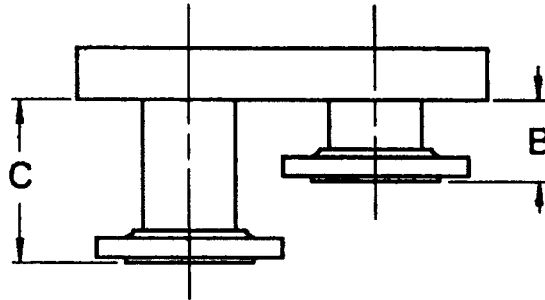


**MODEL AT405**  
**FRAME TYPE F-20**

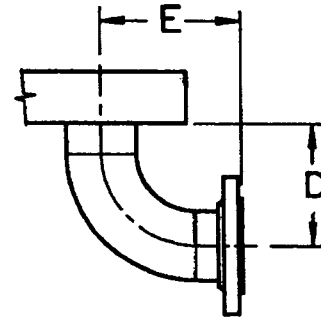
## FLANGED CONNECTIONS



FRONT VIEW



TOP VIEW



TOP VIEW

Connection	Size	A	B	C	D	E	No. Bolts/Conn.	Bolt Size
Studded port	4"	—	—	—	—	—	8	5/8"-11 UNC
Lap-joint flange	3"	7 1/2"	3 1/16"	—	—	—	4	5/8"-11 UNC
	4"	9"	4 13/16"	—	—	—	8	5/8"-11 UNC
	6"	11"	4"	8 3/4"	—	—	8	3/4"-10 UNC
Lap joint with elbow	3"	7 1/2"	—	—	6 1/2"	7 1/2"	4	5/8"-11 UNC
	4"	9"	—	—	8"	9"	8	5/8"-11 UNC
	6"	11"	—	—	11"	12"	8	3/4"-10 UNC

- NOTE: 1. Adjacent flange faces must be offset in some cases. Flanges located at Port Positions 1 and 4 are extended to "C" dimension when offset is required.  
 2. If connections are other than the standard connection (shown on front), or if the unit is a multipass, contact Paul Mueller Company for clarification.

### PLATE CAPACITY / GUIDE LENGTH

Guide length (DM G)	30"	48"
Frame length (DM L)	33 7/8"	51 7/8"
Plate cap. AT405 H/V 0.6 mm	83	171

### PLATE CAPACITY / COMPRESSION-BOLT LENGTH

Compression-bolt length	12"	18"	24"	36"	48"
Plate cap. AT405 H/V 0.6 mm	27	56	86	144	203

### Paul Mueller Company

P.O. Box 828 • Springfield, MO 65801-0828

Telephone: (417) 831-3000 • 1-800-MUELLER

Fax: (417) 831-6642