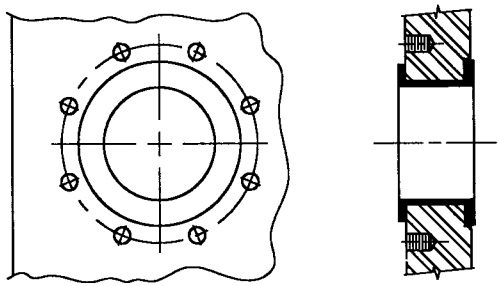
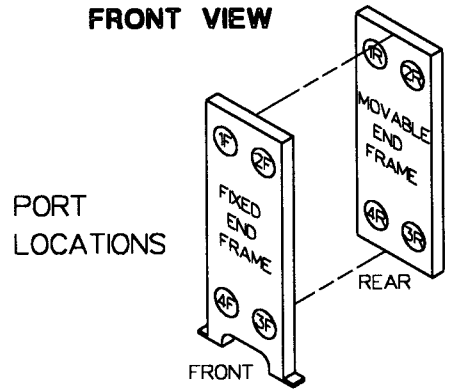
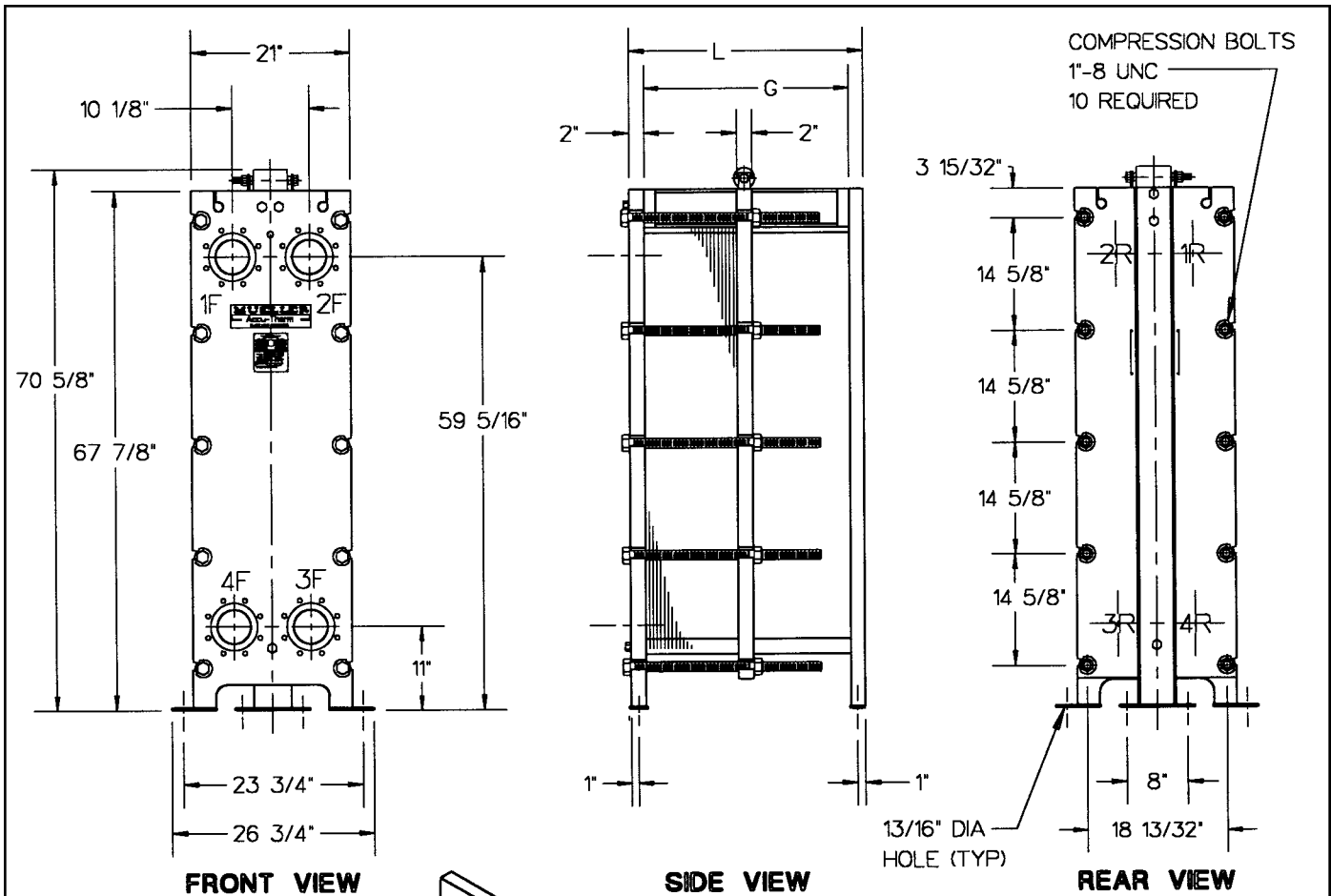



Accu-Therm[®] Plate Heat Exchangers



STANDARD MATERIALS OF CONSTRUCTION

- End frames SA-515-70, SA-516-70, or equivalent
- Plate hanger Type 304 stainless steel
- Compression bolts (zinc plated) SA-193-B7
- Compression nuts (zinc plated) SA-194-2H
- Connection studs (zinc plated) (optional).....SA-193-B7
- Connection nuts (zinc plated) (optional).....SA-193-2H
- Shroud (optional) Type 304 stainless steel
- Paint Corrosion-resistant paint

Refer to computer printout for variable dimensions and complete plate, gasket, and connection specifications.

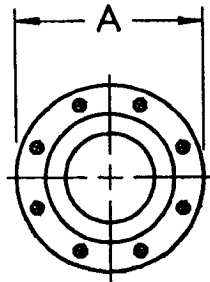


MODEL AT40
FRAME TYPE B-20

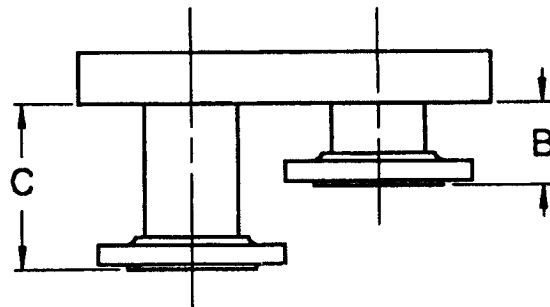
MUELLER®

ACCU-THERM® PLATE HEAT EXCHANGER

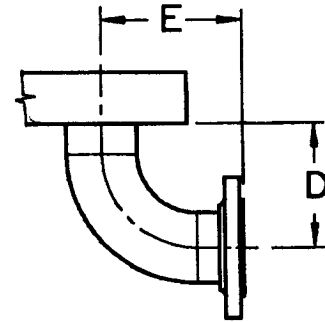
FLANGED CONNECTIONS



FRONT VIEW



TOP VIEW



TOP VIEW

| Connection | Size | A | B | C | D | E | No. Bolts/Conn. | Bolt Size |
|----------------------|------|--------|----------|--------|--------|--------|-----------------|-------------|
| Studded port | 4" | — | — | — | — | — | 8 | 5/8"-11 UNC |
| Lap-joint flange | 3" | 7 1/2" | 3 1/16" | — | — | — | 4 | 5/8"-11 UNC |
| | 4" | 9" | 4 13/16" | — | — | — | 8 | 5/8"-11 UNC |
| | 6" | 11" | 4" | 8 3/4" | — | — | 8 | 3/4"-10 UNC |
| Lap joint with elbow | 3" | 7 1/2" | — | — | 6 1/2" | 7 1/2" | 4 | 5/8"-11 UNC |
| | 4" | 9" | — | — | 8" | 9" | 8 | 5/8"-11 UNC |
| | 6" | 11" | — | — | 11" | 12" | 8 | 3/4"-10 UNC |

- NOTE: 1. Adjacent flange faces must be offset in some cases. Flanges located at Port Positions 1 and 4 are extended to "C" dimension when offset is required.
 2. If connections are other than the standard connection (shown on front), or if the unit is a multipass, contact Paul Mueller Company for clarification.

PLATE CAPACITY / GUIDE LENGTH

| Guide length (DM G) | 30" | 48" | 66" | 84" | 102" | 120" | 138" |
|------------------------------------|---------|---------|---------|---------|----------|----------|----------|
| Frame length (DM L) | 33 7/8" | 51 7/8" | 69 7/8" | 87 7/8" | 105 7/8" | 123 7/8" | 141 7/8" |
| Plate cap. AT40 H/V 0.6 mm | 60 | 148 | 236 | 324 | 413 | 501 | 589 |
| Plate cap. AT40 P 0.6 mm | 63 | 155 | 247 | 339 | 431 | 523 | 615 |
| Plate cap. AT40 FF 0.85 mm | 44 | 110 | 175 | 240 | 305 | 370 | 436 |
| Plate cap. AT40 lock-in H/V 0.6 mm | 60 | 149 | 237 | 326 | 415 | 503 | 592 |
| Plate cap. AT40 lock-in H/V 0.5 mm | 62 | 152 | 243 | 333 | 424 | 515 | 605 |
| Plate cap. AT40M H/V 0.6 mm | 63 | 177 | 251 | 345 | 439 | 533 | 627 |
| Plate cap. AT40M H/V 0.5 mm | 65 | 181 | 258 | 355 | 451 | 547 | 644 |

PLATE CAPACITY / COMPRESSION-BOLT LENGTH

| Compression-bolt length | 12" | 18" | 24" | 36" | 48" | 60" | 78" | 96" | 114" | 132" |
|------------------------------------|-----|-----|-----|-----|-----|-----|-----|-----|------|------|
| Plate cap. AT40 H/V 0.6 mm | 27 | 56 | 86 | 144 | 203 | 262 | 350 | 438 | 526 | 615 |
| Plate cap. AT40 P 0.6 mm | 28 | 59 | 89 | 151 | 212 | 274 | 366 | 458 | 550 | 642 |
| Plate cap. AT40 FF 0.85 mm | 20 | 42 | 62 | 107 | 150 | 194 | 259 | 324 | 389 | 455 |
| Plate cap. AT40 lock-in H/V 0.6 mm | 27 | 57 | 86 | 145 | 204 | 263 | 352 | 440 | 529 | 618 |
| Plate cap. AT40 lock-in H/V 0.5 mm | 28 | 58 | 88 | 148 | 209 | 269 | 360 | 450 | 541 | 632 |
| Plate cap. AT40M H/V 0.6 mm | 29 | 60 | 91 | 172 | 216 | 279 | 373 | 466 | 560 | 654 |
| Plate cap. AT40M H/V 0.5 mm | 29 | 62 | 94 | 177 | 222 | 286 | 383 | 479 | 575 | 672 |

Paul Mueller Company

P.O. Box 828 • Springfield, MO 65801-0828

Telephone: (417) 831-3000 • 1-800-MUELLER

Fax: (417) 831-6642