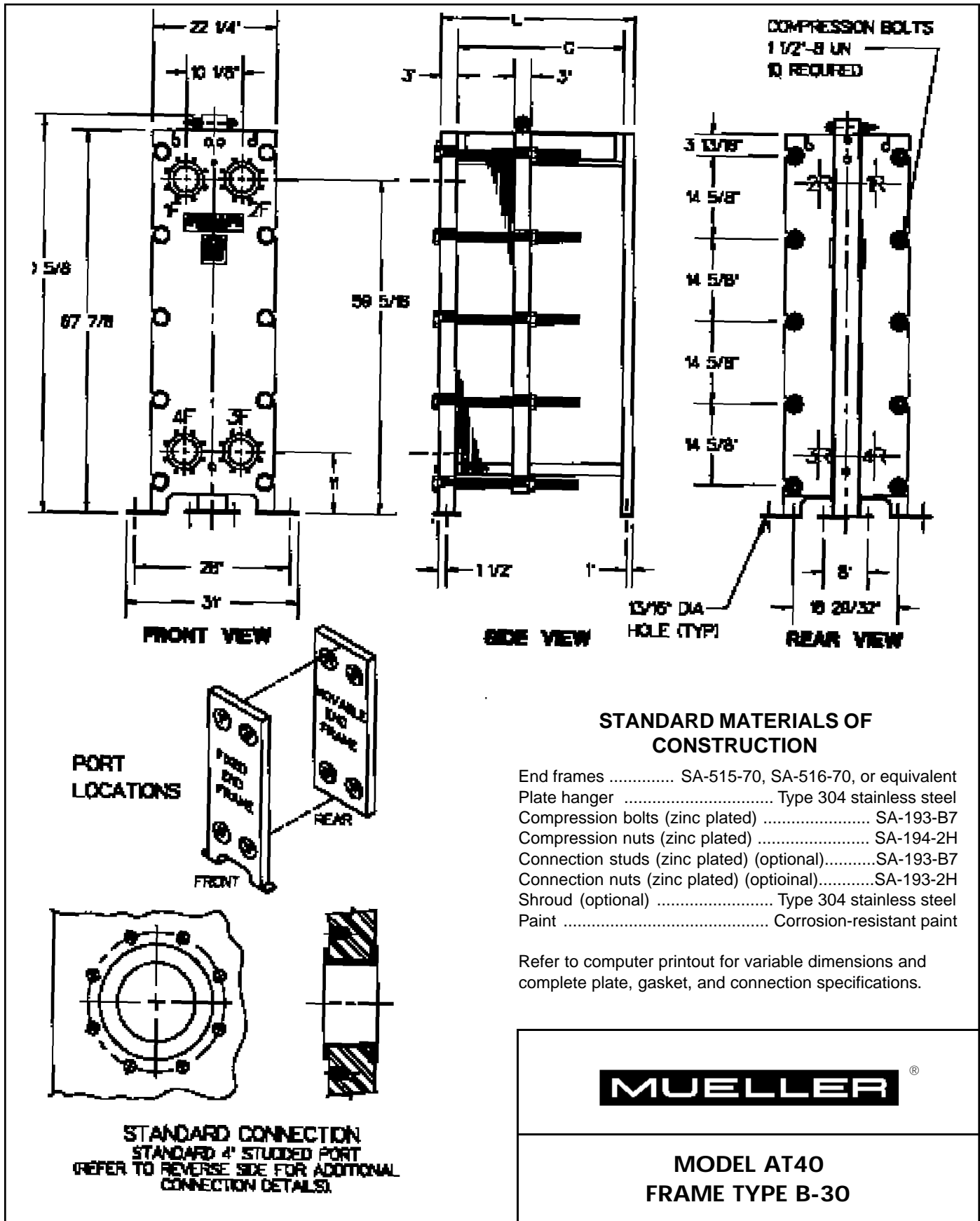
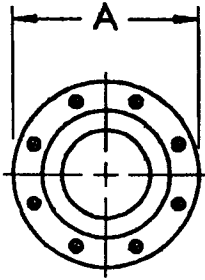


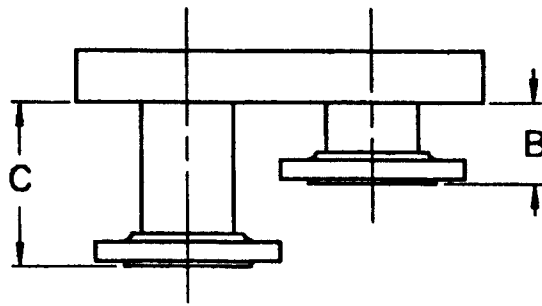
# Accu-Therm<sup>®</sup> Plate Heat Exchangers



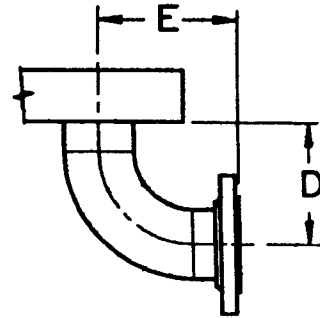
## FLANGED CONNECTIONS



FRONT VIEW



TOP VIEW



TOP VIEW

Connection	Size	A	B	C	D	E	No. Bolts/Conn.	Bolt Size
Studded port	4"	—	—	—	—	—	8	3/4"-10 UNC
Lap-joint flange	3"	8 1/4"	4	—	—	—	8	3/4"-10 UNC
	4"	10"	3 13/16"	7 3/4"	—	—	8	3/4"-10 UNC
	6"	12 1/2"	4"	8"	—	—	12	3/4"-10 UNC
Lap joint with elbow	3"	8 1/4"	—	—	6 1/2"	7 1/2"	8	3/4"-10 UNC
	4"	10"	—	—	8"	9"	8	3/4"-10 UNC
	6"	12 1/2"	—	—	11"	12"	12	3/4"-10 UNC

- NOTE: 1. Adjacent flange faces must be offset in some cases. Flanges located at Port Positions 1 and 4 are extended to "C" dimension when offset is required.  
 2. If connections are other than the standard connection (shown on front), or if the unit is a multipass, contact Paul Mueller Company for clarification.

## PLATE CAPACITY / GUIDE LENGTH

Guide length (DM G)	30"	48"	66"	84"	102"	120"	138"
Frame length (DM L)	34 7/8"	52 7/8"	70 7/8"	88 7/8"	106 7/8"	124 7/8"	142 7/8"
Plate cap. AT40 P 0.6 mm	63	155	247	339	431	523	615

## PLATE CAPACITY / COMPRESSION-BOLT LENGTH

Compression-bolt length	12"	18"	24"	36"	48"	60"	78"	96"	114"	132"
Plate cap. AT40 P 0.6 mm	28	59	89	151	212	274	366	458	550	642

### Paul Mueller Company

P.O. Box 828 • Springfield, MO 65801-0828

Telephone: (417) 831-3000 • 1-800-MUELLER

Fax: (417) 831-6642