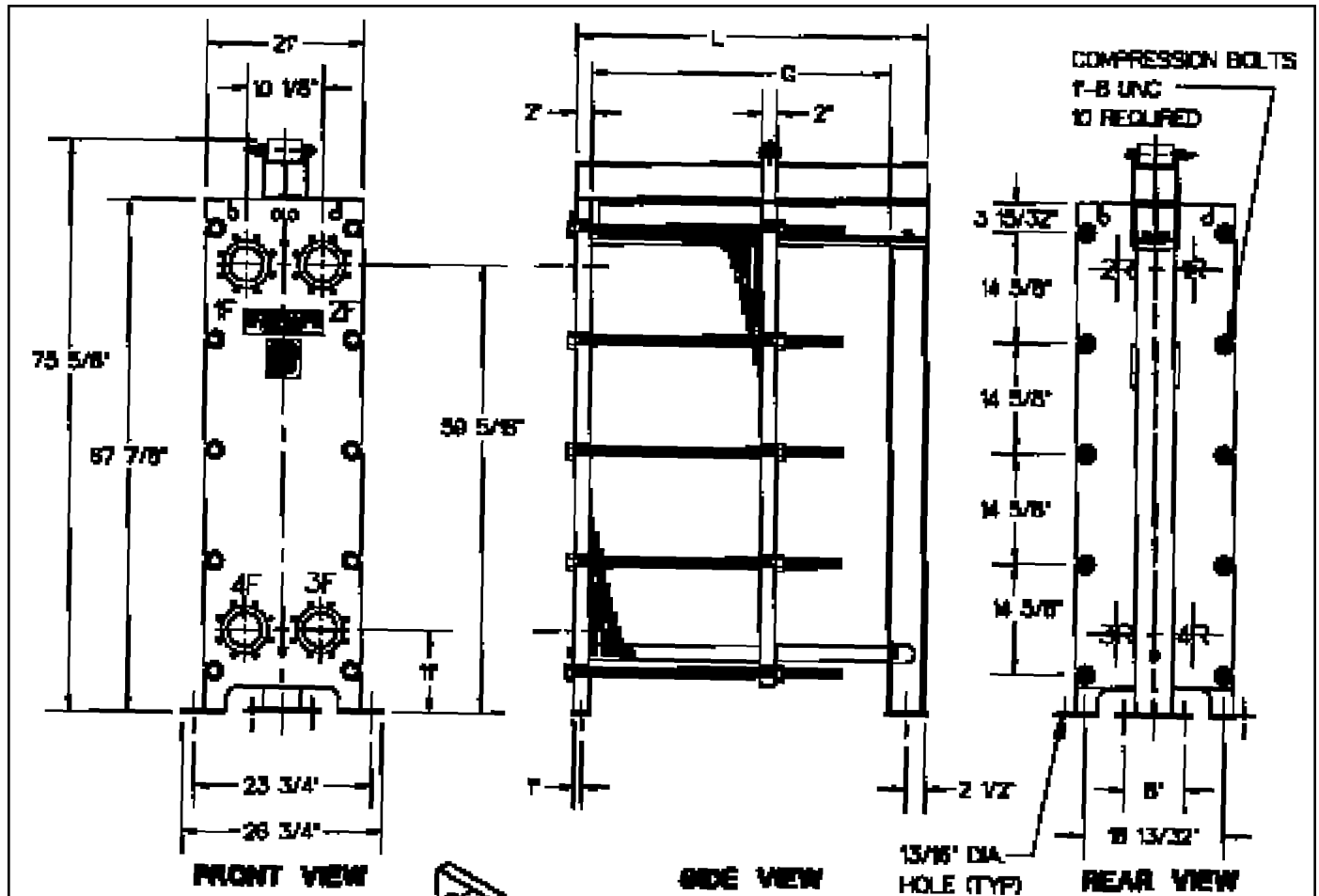
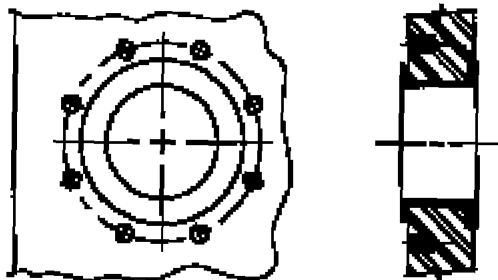
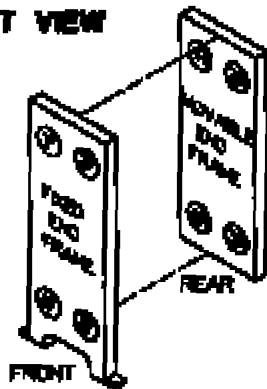


# Accu-Therm® Plate Heat Exchangers



PORT LOCATIONS



**STANDARD CONNECTION**  
 STANDARD 4" STUBBED PORT  
 (REFER TO REVERSE SIDE FOR ADDITIONAL CONNECTION DETAILS)

## STANDARD MATERIALS OF CONSTRUCTION

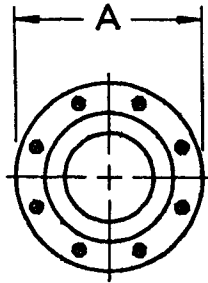
End frames ..... SA-515-70, SA-516-70, or equivalent  
 Plate hanger ..... Type 304 stainless steel  
 Compression bolts (zinc plated) ..... SA-193-B7  
 Compression nuts (zinc plated) ..... SA-194-2H  
 Connection studs (zinc plated) (optional).....SA-193-B7  
 Connection nuts (zinc plated) (optional).....SA-193-2H  
 Shroud (optional) ..... Type 304 stainless steel  
 Paint ..... Corrosion-resistant paint

Refer to computer printout for variable dimensions and complete plate, gasket, and connection specifications.

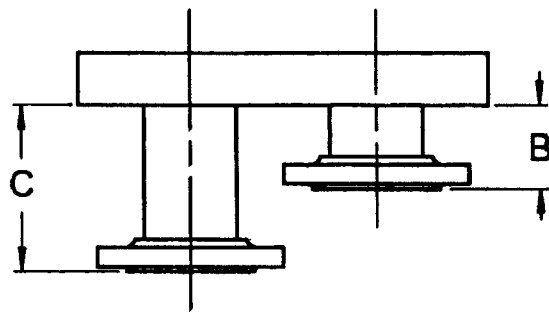
**MUELLER**®

**MODEL AT40**  
**FRAME TYPE RB-20**

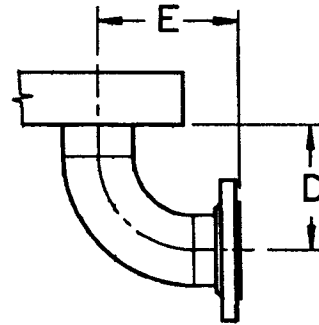
## FLANGED CONNECTIONS



FRONT VIEW



TOP VIEW



TOP VIEW

Connection	Size	A	B	C	D	E	No. Bolts/Conn.	Bolt Size
Studded port	4"	—	—	—	—	—	8	5/8"-11 UNC
Lap-joint flange	3"	7 1/2"	3 1/16"	—	—	—	4	5/8"-11 UNC
	4"	9"	4 13/16"	—	—	—	8	5/8"-11 UNC
	6"	11"	4"	8 3/4"	—	—	8	3/4"-10 UNC
Lap joint with elbow	3"	7 1/2"	—	—	6 1/2"	7 1/2"	4	5/8"-11 UNC
	4"	9"	—	—	8"	9"	8	5/8"-11 UNC
	6"	11"	—	—	11"	12"	8	3/4"-10 UNC

- NOTE: 1. Adjacent flange faces must be offset in some cases. Flanges located at Port Positions 1 and 4 are extended to "C" dimension when offset is required.  
 2. If connections are other than the standard connection (shown on front), or if the unit is a multipass, contact Paul Mueller Company for clarification.

## PLATE CAPACITY / GUIDE LENGTH

Guide length (DM G)	156"
Frame length (DM L)	163"
Plate cap. AT40 H/V 0.6 mm	677
Plate cap. AT40 P 0.6 mm	707
Plate cap. AT40 FF 0.85 mm	501
Plate cap. AT40 lock-in H/V 0.6 mm	680
Plate cap. AT40 lock-in H/V 0.5 mm	696
Plate cap. AT40M H/V 0.6 mm	720
Plate cap. AT40M H/V 0.5 mm	740

## PLATE CAPACITY / COMPRESSION-BOLT LENGTH

Compression-bolt length	114"	132"	144"
Plate cap. AT40 H/V 0.6 mm	526	615	673
Plate cap. AT40 P 0.6 mm	550	642	703
Plate cap. AT40 FF 0.85 mm	389	455	498
Plate cap. AT40 lock-in H/V 0.6 mm	529	618	676
Plate cap. AT40 lock-in H/V 0.5 mm	541	632	692
Plate cap. AT40M H/V 0.6 mm	560	654	717
Plate cap. AT40M H/V 0.5 mm	575	672	736

### Paul Mueller Company

P.O. Box 828 • Springfield, MO 65801-0828

Telephone: (417) 831-3000 • 1-800-MUELLER

Fax: (417) 831-6642