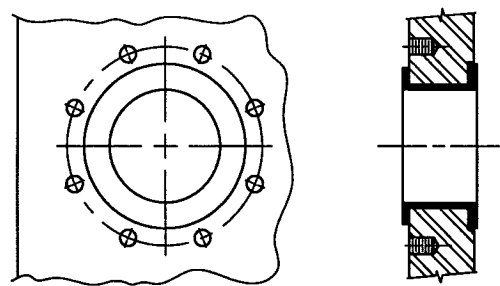
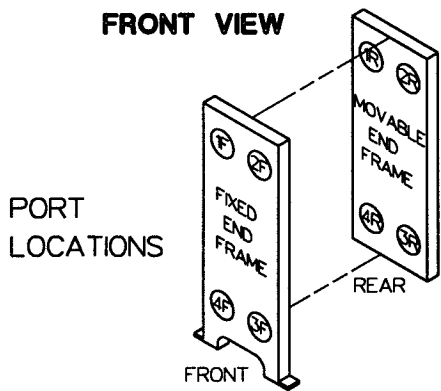
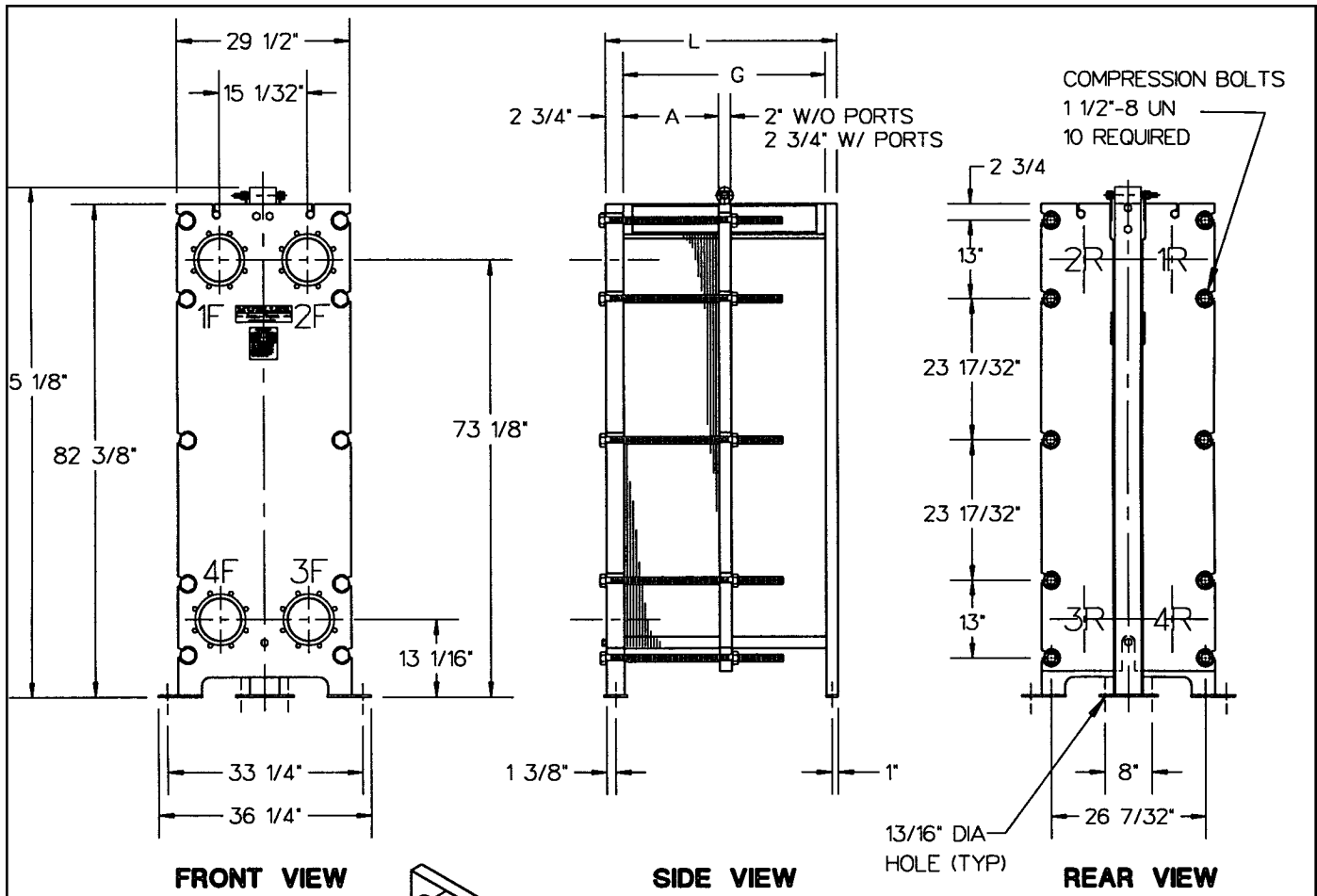



Accu-Therm® Plate Heat Exchangers



STANDARD MATERIALS OF CONSTRUCTION

- End frames SA-515-70, SA-516-70, or equivalent
- Plate hanger Type 304 stainless steel
- Compression bolts (zinc plated) SA-193-B7
- Compression nuts (zinc plated) SA-194-2H
- Connection studs (zinc plated) (optional).....SA-193-B7
- Connection nuts (zinc plated) (optional).....SA-193-2H
- Shroud (optional) Type 304 stainless steel
- Paint Corrosion-resistant paint

Refer to computer printout for variable dimensions and complete plate, gasket, and connection specifications.

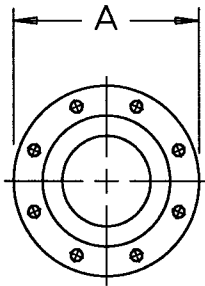


**MODEL AT80
FRAME TYPE B-20**

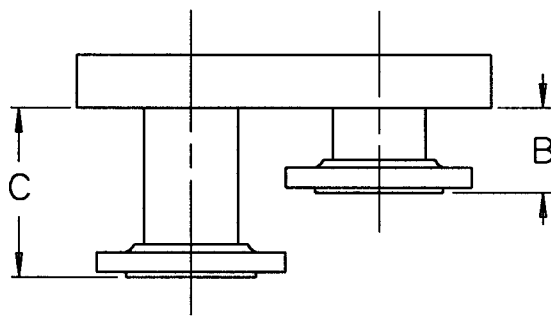
MUELLER®

ACCU-THERM® PLATE HEAT EXCHANGER

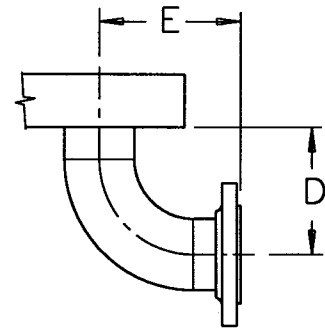
FLANGED CONNECTIONS



FRONT VIEW



TOP VIEW



TOP VIEW

CONNECTION	SIZE	A	B	C	D	E	NO. BOLTS/CONN	BOLT SIZE
STUDED PORT	6"	-	-	-	-	-	8	3/4"- 10UNC
	8"	-	-	-	-	-	8	3/4"- 10UNC
LAP JOINT FLANGE	6"	11"	7 1/16"	-	-	-	8	3/4"- 10UNC
	8"	13 1/2"	5 5/8"	-	-	-	8	3/4"- 10UNC
LAP JOINT W/ ELBOW	6"	11"	-	-	11"	12"	8	3/4"- 10UNC
	8"	13 1/2"	-	-	14"	15"	8	3/4"- 10UNC

NOTE: 1. ADJACENT FLANGE FACES MUST BE OFFSET IN SOME CASES. FLANGES LOCATED AT PORT POSITIONS 1 AND 4 ARE EXTENDED TO "C" DIMENSION WHEN OFFSET IS REQUIRED.

2. IF CONNECTIONS ARE OTHER THAN THE STANDARD CONNECTION (SHOWN ON FRONT), OR IF THE UNIT IS A MULTI-PASS, CONTACT PAUL MUELLER COMPANY FOR CLARIFICATION.

PLATE CAPACITY / GUIDE LENGTH

GUIDE LENGTH (DM G)	30"	48"	66"	84"	102"	120"
FRAME LENGTH	34 ⁷ / ₈	52 ⁷ / ₈	70 ⁷ / ₈	88 ⁷ / ₈	106 ⁷ / ₈	124 ⁷ / ₈
PLATE CAP. AT80 H/V 0.6mm	39	115	200	285	370	456
PLATE CAP. AT80 F/G 0.6mm	40	153	267	381	490	—
PLATE CAP. AT 80 M H/V 0.5mm	36	140	243	347	451	554
PLATE CAP. AT 80 M H/V 0.6mm	35	136	237	338	439	540

PLATE CAPACITY / COMPRESSION BOLT LENGTH

COMPRESSION BOLT LENGTH	12"	18"	24"	36"	48"	60"	78"	96"
PLATE CAP. AT80 H/V 0.6mm	21	50	78	135	192	249	334	419
PLATE CAP. AT80 F/G 0.6mm	28	66	104	180	256	332	446	559
PLATE CAP. AT80 M H/V 0.5mm	26	60	95	164	233	302	406	510
PLATE CAP. AT80 M H/V 0.6mm	25	59	93	160	227	295	396	497

Paul Mueller Company

P.O. Box 828 • Springfield, MO 65801-0828

Telephone: (417) 831-3000 • 1-800-MUELLER

Fax: (417) 831-6642