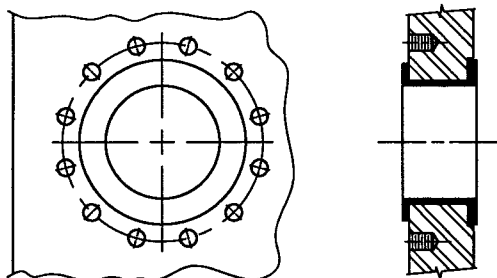
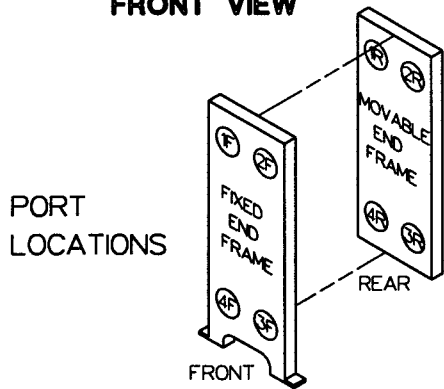
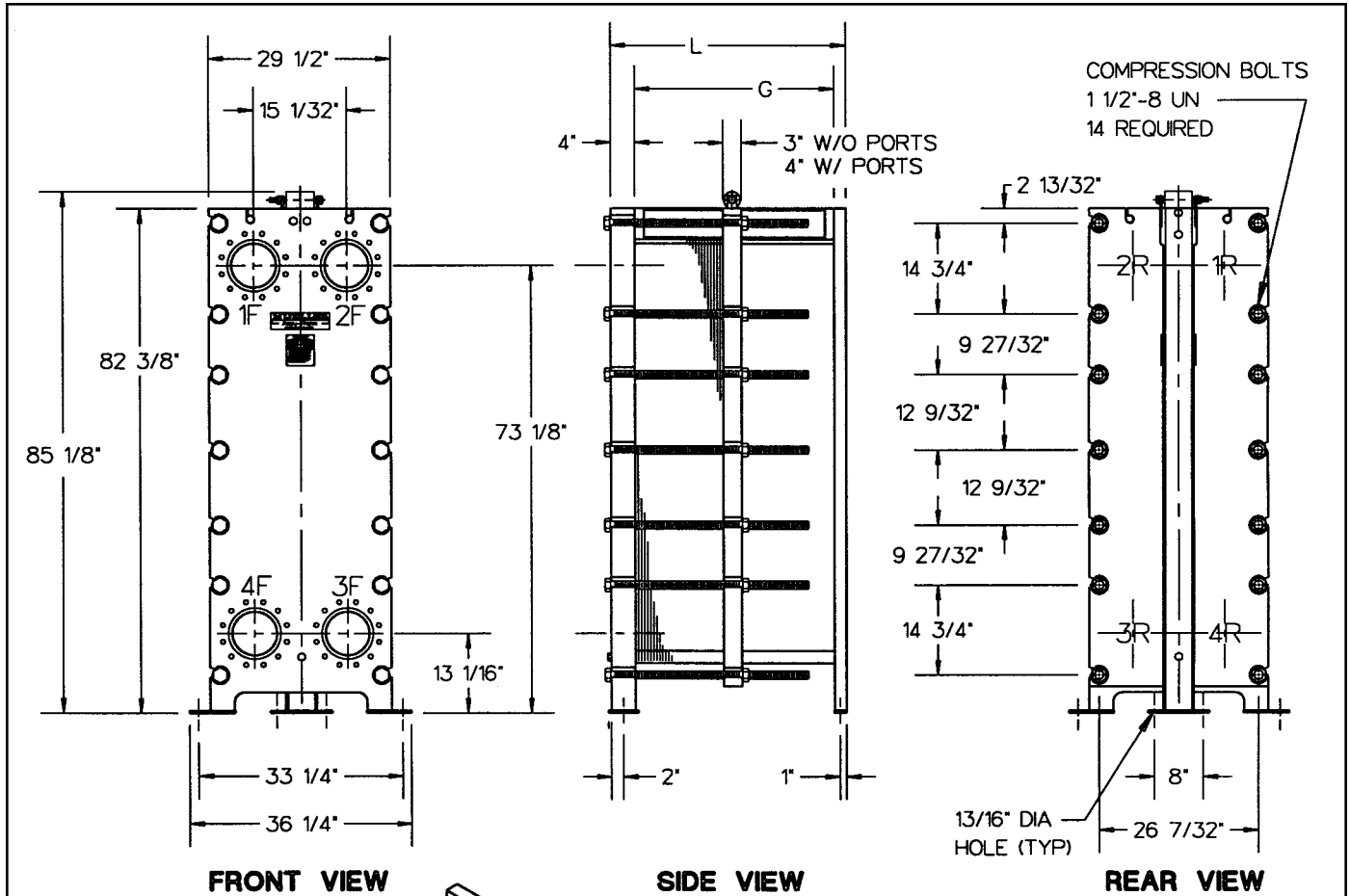


Accu-Therm[®] Plate Heat Exchangers



STANDARD MATERIALS OF CONSTRUCTION

End frames SA-515-70, SA-516-70, or equivalent
 Plate hanger Type 304 stainless steel
 Compression bolts (zinc plated) SA-193-B7
 Compression nuts (zinc plated) SA-194-2H
 Connection studs (zinc plated) (optional).....SA-193-B7
 Connection nuts (zinc plated) (optional).....SA-193-2H
 Shroud (optional) Type 304 stainless steel
 Paint Corrosion-resistant paint

Refer to computer printout for variable dimensions and complete plate, gasket, and connection specifications.

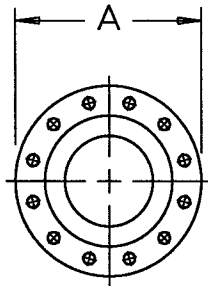
MUELLER[®]

**MODEL AT80
FRAME TYPE B-30**

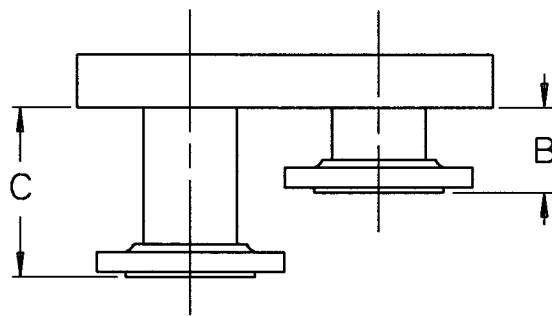
MUELLER®

ACCU-THERM® PLATE HEAT EXCHANGER

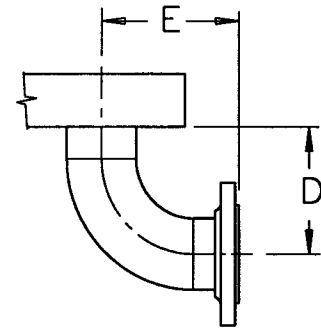
FLANGED CONNECTIONS



FRONT VIEW



TOP VIEW



TOP VIEW

CONNECTION	SIZE	A	B	C	D	E	NO. BOLTS/ CONN	BOLT SIZE
STUDED PORT	6"	-	-	-	-	-	12	3/4"- 10UNC
LAP JOINT FLANGE	6"	12 1/2"	6 1/8"	-	-	-	12	3/4"- 10UNC
	8"	15"	4 5/8"	-	-	-	12	7/8"- 9UNC
LAP JOINT W/ ELBOW	6"	12 1/2"	-	-	11"	12"	12	3/4"- 10UNC
	8"	15"	-	-	14"	15"	12	7/8"- 9UNC

NOTE: 1. ADJACENT FLANGE FACES MUST BE OFFSET IN SOME CASES. FLANGES LOCATED AT PORT POSITIONS 1 AND 4 ARE EXTENDED TO "C" DIMENSION WHEN OFFSET IS REQUIRED.

2. IF CONNECTIONS ARE OTHER THAN THE STANDARD CONNECTION (SHOWN ON FRONT), OR IF THE UNIT IS A MULTI-PASS, CONTACT PAUL MUELLER COMPANY FOR CLARIFICATION.

PLATE CAPACITY / GUIDE LENGTH

GUIDE LENGTH (DIM G)	30"	48"	66"	84"	102"
FRAME LENGTH (DIM L)	35 7/8"	53 7/8"	71 7/8"	89 7/8"	107 7/8"
PLATE CAP. AT80 F/G 0.6mm	40	153	267	381	490

PLATE CAPACITY / COMPRESSION BOLT LENGTH

COMPRESSION BOLT LENGTH	12"	18"	24"	36"	48"	60"	78"
PLATE CAP. AT80 F/G 0.6mm	28	66	104	180	256	332	446

Paul Mueller Company

P.O. Box 828 • Springfield, MO 65801-0828

Telephone: (417) 831-3000 • 1-800-MUELLER

Fax: (417) 831-6642