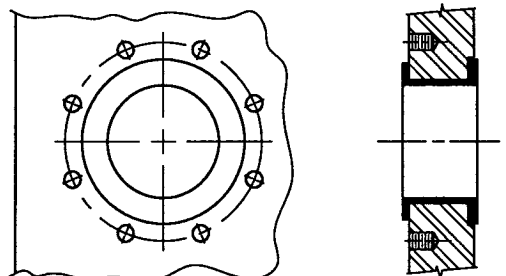
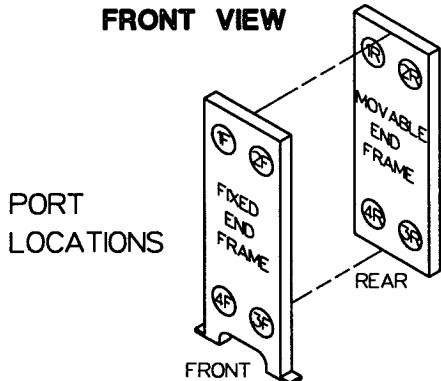
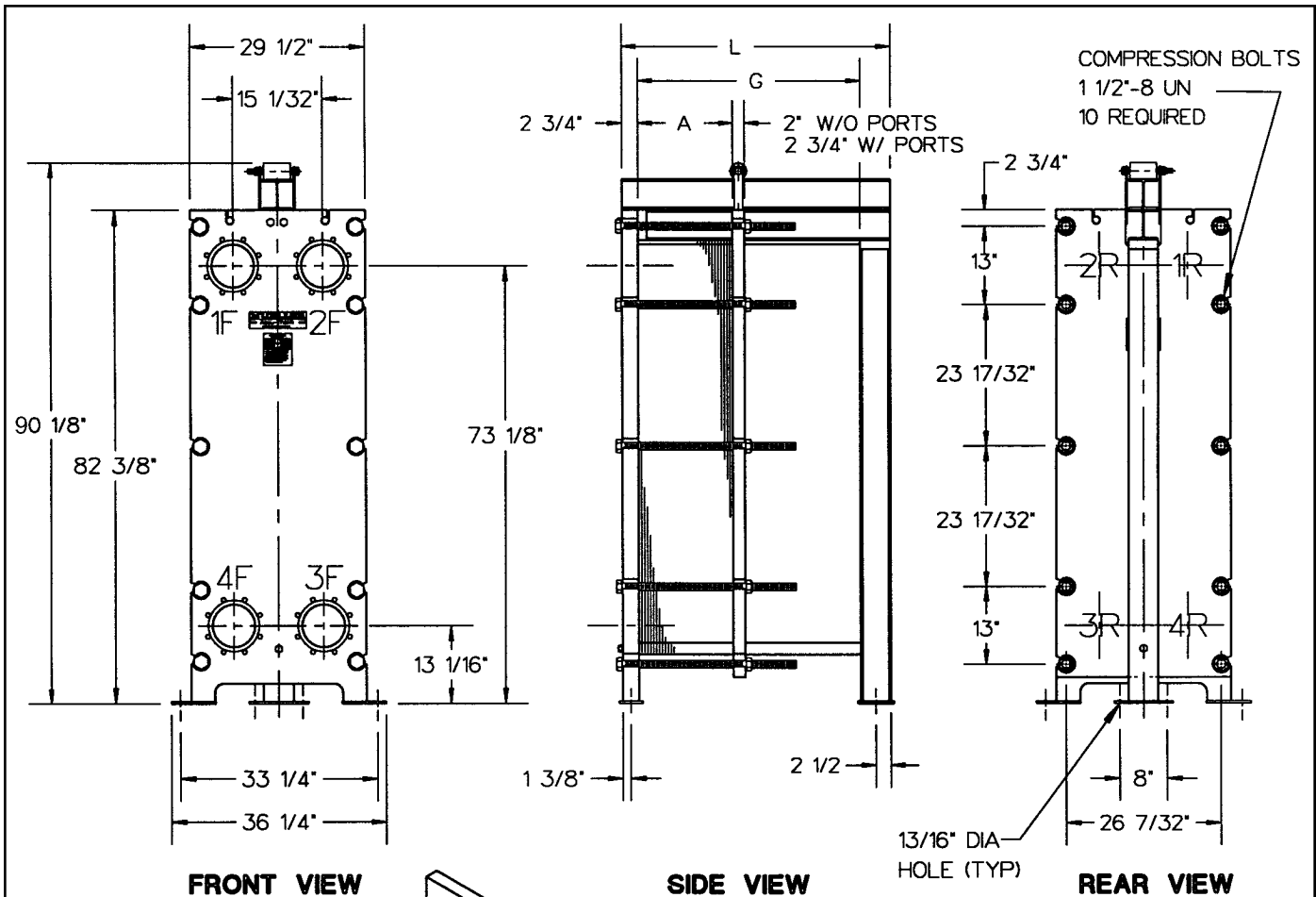


Accu-Therm[®]


Plate Heat Exchangers



STANDARD MATERIALS OF CONSTRUCTION

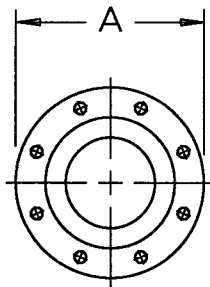
- End frames SA-515-70, SA-516-70, or equivalent
- Plate hanger Type 304 stainless steel
- Compression bolts (zinc plated) SA-193-B7
- Compression nuts (zinc plated) SA-194-2H
- Connection studs (zinc plated) (optional).....SA-193-B7
- Connection nuts (zinc plated) (optional).....SA-193-2H
- Shroud (optional) Type 304 stainless steel
- Paint Corrosion-resistant paint

Refer to computer printout for variable dimensions and complete plate, gasket, and connection specifications.

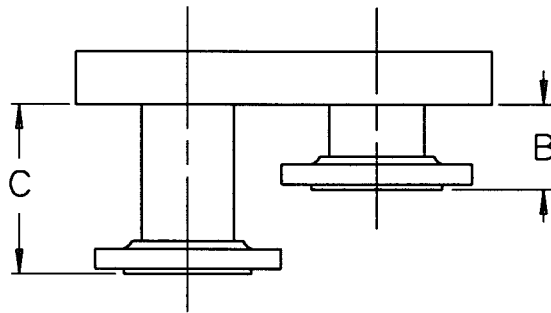


MODEL AT80
FRAME TYPE RB-20

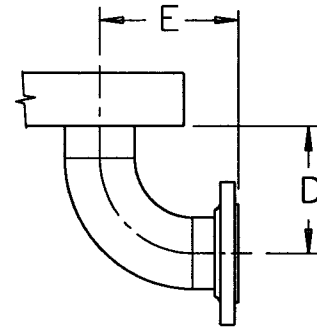
FLANGED CONNECTIONS



FRONT VIEW



TOP VIEW



TOP VIEW

CONNECTION	SIZE	A	B	C	D	E	NO. BOLTS/ CONN	BOLT SIZE
STUDED PORT	6"	-	-	-	-	-	8	3/4"- 10UNC
	4"	-	-	-	-	-	8	3/4"- 10UNC
LAP JOINT FLANGE	6"	11"	7 1/16"	-	-	-	8	3/4"- 10UNC
	8"	13 1/2"	5 5/8"	-	-	-	8	3/4"- 10UNC
LAP JOINT W/ ELBOW	6"	11"	-	-	11"	12"	8	3/4"- 10UNC
	8"	13 1/2"	-	-	14"	15"	8	3/4"- 10UNC

NOTE: 1. ADJACENT FLANGE FACES MUST BE OFFSET IN SOME CASES. FLANGES LOCATED AT PORT POSITIONS 1 AND 4 ARE EXTENDED TO "C" DIMENSION WHEN OFFSET IS REQUIRED.

2. IF CONNECTIONS ARE OTHER THAN THE STANDARD CONNECTION (SHOWN ON FRONT), OR IF THE UNIT IS A MULTI-PASS, CONTACT PAUL MUELLER COMPANY FOR CLARIFICATION.

PLATE CAPACITY / GUIDE LENGTH

GUIDE LENGTH (DIM G)	120"	138"	156"
FRAME LENGTH (DIM L)	128"	146"	164"
PLATE CAP. AT80 H/V 0.6mm	-	541	626
PLATE CAP. AT80 F/G 0.6mm	608	722	836

PLATE CAPACITY / COMPRESSION BOLT LENGTH

COMPRESSION BOLT LENGTH	114"	132"	144"
PLATE CAP. AT80 H/V 0.6mm	504	589	640
PLATE CAP. AT80 F/G 0.6mm	673	787	861

Paul Mueller Company

P.O. Box 828 • Springfield, MO 65801-0828

Telephone: (417) 831-3000 • 1-800-MUELLER

Fax: (417) 831-6642